

For Research Use Only

# CMC1 Polyclonal antibody

Catalog Number: 24030-1-AP **1 Publications**



## Basic Information

**Catalog Number:**

24030-1-AP

**Size:**

1500 µg/ml

**Source:**

Rabbit

**Isotype:**

IgG

**Immunogen Catalog Number:**

AG21224

**GenBank Accession Number:**

BC052644

**GeneID (NCBI):**

152100

**UNIPROT ID:**

Q7Z7K0

**Full Name:**

COX assembly mitochondrial protein homolog (S. cerevisiae)

**Calculated MW:**

106 aa, 12 kDa

**Observed MW:**

12-15 kDa

**Purification Method:**

Antigen affinity purification

**Recommended Dilutions:**

WB 1:2000-1:12000  
IP 0.5-4.0 µg for 1.0-3.0 mg of total protein lysate  
IHC 1:50-1:500

## Applications

**Tested Applications:**

IHC, IP, WB, ELISA

**Cited Applications:**

WB

**Species Specificity:**

human, mouse

**Cited Species:**

human

**Note-IHC: suggested antigen retrieval with TE buffer pH 9.0; (\*) Alternatively, antigen retrieval may be performed with citrate buffer pH 6.0**

**Positive Controls:**

WB : K-562 cells, mouse liver tissue

IP : K-562 cells,

IHC : human liver cancer tissue,

## Background Information

### Notable Publications

Author	Pubmed ID	Journal	Application
Bixian Luo	36505872	Front Oncol	WB

## Storage

**Storage:**

Store at -20°C. Stable for one year after shipment.

**Storage Buffer:**

PBS with 0.02% sodium azide and 50% glycerol pH 7.3.

Aliquoting is unnecessary for -20°C storage

For technical support and original validation data for this product please contact:

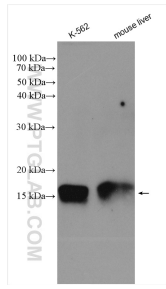
T: 4006900926

E: Proteintech-CN@ptglab.com

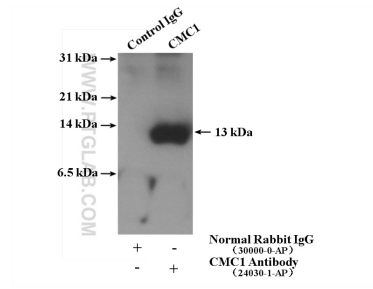
W: ptgcn.com

**This product is exclusively available under Proteintech Group brand and is not available to purchase from any other manufacturer.**

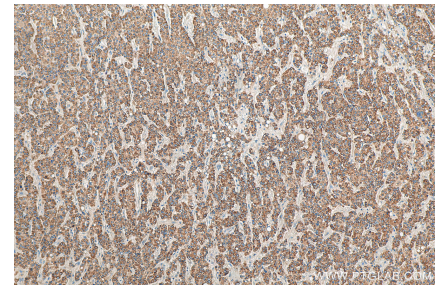
## Selected Validation Data



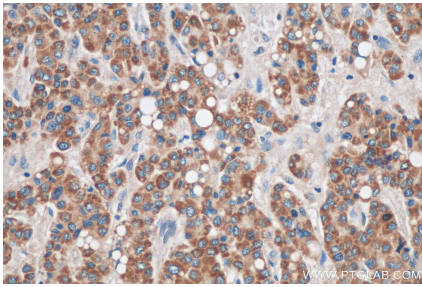
Various lysates were subjected to SDS PAGE followed by western blot with 24030-1-AP (CMC1 antibody) at dilution of 1:6000 incubated at room temperature for 1.5 hours.



IP result of anti-CMC1 (IP:24030-1-AP, 4ug; Detection:24030-1-AP 1:300) with K-562 cells lysate 4000 ug.



Immunohistochemical analysis of paraffin-embedded human liver cancer tissue slide using 24030-1-AP (CMC1 antibody) at dilution of 1:200 (under 10x lens). Heat mediated antigen retrieval with Tris-EDTA buffer (pH 9.0).



Immunohistochemical analysis of paraffin-embedded human liver cancer tissue slide using 24030-1-AP (CMC1 antibody) at dilution of 1:200 (under 40x lens). Heat mediated antigen retrieval with Tris-EDTA buffer (pH 9.0).