

For Research Use Only

# CXorf56 Polyclonal antibody

Catalog Number: 24021-1-AP **4 Publications**



## Basic Information

<b>Catalog Number:</b> 24021-1-AP	<b>GenBank Accession Number:</b> BC023506	<b>Purification Method:</b> Antigen Affinity purified
<b>Size:</b> 600 µg/ml	<b>GeneID (NCBI):</b> 63932	<b>Recommended Dilutions:</b> WB 1:500-1:2000 IP 0.5-4.0 µg for 1.0-3.0 mg of total protein lysate IF 1:20-1:200
<b>Source:</b> Rabbit	<b>UNIPROT ID:</b> Q9H5V9	
<b>Isotype:</b> IgG	<b>Full Name:</b> chromosome X open reading frame 56	
<b>Immunogen Catalog Number:</b> AG19856	<b>Calculated MW:</b> 222 aa, 26 kDa	
	<b>Observed MW:</b> 26-30 kDa	

## Applications

<b>Tested Applications:</b> IF/ICC, IP, WB, ELISA	<b>Positive Controls:</b> WB : HeLa cells, HEK-293 cells, mouse kidney tissue IP : mouse kidney tissue, IF : HeLa cells,
<b>Cited Applications:</b> WB, IP	
<b>Species Specificity:</b> human, mouse	
<b>Cited Species:</b> human, monkey	

## Background Information

CxORF56 (also known as STEEP) is an evolutionarily highly conserved protein whose function is unknown. Recently CxORF56 has been identified as a protein that interacts with STING, and it is essential for STING ER exit. CxORF56-dependent STING ER exit is essential for STING signaling in antiviral defense and in inflammatory diseases.

## Notable Publications

Author	Pubmed ID	Journal	Application
Thaneas Prabakaran	33813142	EBioMedicine	WB
Bao-Cun Zhang	38553448	Nat Commun	WB
Ying Zhu	37156759	NPJ Breast Cancer	WB, IP

## Storage

**Storage:**  
Store at -20°C. Stable for one year after shipment.  
**Storage Buffer:**  
PBS with 0.02% sodium azide and 50% glycerol pH 7.3.  
Aliquoting is unnecessary for -20°C storage

For technical support and original validation data for this product please contact:

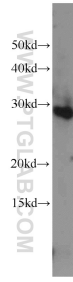
T: 4006900926

E: [Proteintech-CN@ptglab.com](mailto:Proteintech-CN@ptglab.com)

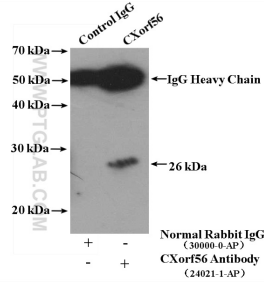
W: [ptgcn.com](http://ptgcn.com)

**This product is exclusively available under Proteintech Group brand and is not available to purchase from any other manufacturer.**

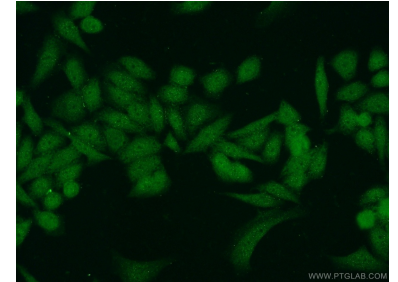
## Selected Validation Data



HeLa cells were subjected to SDS PAGE followed by western blot with 24021-1-AP (CXorf56 antibody) at dilution of 1:1000 incubated at room temperature for 1.5 hours.



IP result of anti-CXorf56 (IP:24021-1-AP, 4ug; Detection:24021-1-AP 1:1000) with mouse kidney tissue lysate 8000ug.



Immunofluorescent analysis of HeLa cells using 24021-1-AP (CXorf56 antibody) at dilution of 1:50 and Alexa Fluor 488-conjugated AffiniPure Goat Anti-Rabbit IgG(H+L).