

For Research Use Only

LIN28B Polyclonal antibody

Catalog Number: 24017-1-AP

5 Publications



Basic Information

Catalog Number:

24017-1-AP

Size:

600 µg/ml

Source:

Rabbit

Isotype:

IgG

Immunogen Catalog Number:

AG21241

GenBank Accession Number:

BC137526

GeneID (NCBI):

389421

UNIPROT ID:

Q6ZN17

Full Name:

lin-28 homolog B (C. elegans)

Calculated MW:

250 aa, 27 kDa

Observed MW:

35 kDa

Purification Method:

Antigen affinity purification

Recommended Dilutions:

WB 1:500-1:3000

IP 0.5-4.0 µg for 1.0-3.0 mg of total protein lysate

IF/ICC 1:200-1:800

Applications

Tested Applications:

WB, IF/ICC, IP, ELISA

Cited Applications:

WB, IHC, IF, IP, PLA

Species Specificity:

human, mouse

Cited Species:

human, mouse

Positive Controls:

WB : HEK-293 cells, HepG2 cells, K-562 cells

IP : HEK-293 cells,

IF/ICC : NCCIT cells,

Background Information

LIN28B, also named as CSDD2, belongs to the lin-28 family. It acts as a suppressor of microRNA (miRNA) biogenesis by specifically binding the precursor let-7 (pre-let-7). LIN28B is specifically expressed in embryonic muscle, neurons, and epithelia, as well as in embryonic carcinoma cells. However, it is suppressed in most adult tissues except for skeletal and cardiac muscle. The calculated molecular weight of LIN28B is 27 kDa, but a 35 kDa band has been detected in some articles (PMID: 33029224, 33378003).

Notable Publications

Author	Pubmed ID	Journal	Application
Nam-Kyung Yu	34816099	iScience	WB, PLA
Xi Zhao	35148224	Pharm Biol	WB
Qian Hu	25197381	Int J Clin Exp Pathol	IP, IHC

Storage

Storage:

Store at -20°C. Stable for one year after shipment.

Storage Buffer:

PBS with 0.02% sodium azide and 50% glycerol pH 7.3.

Aliquoting is unnecessary for -20°C storage

For technical support and original validation data for this product please contact:

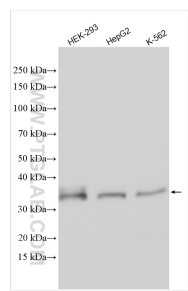
T: 4006900926

E: Proteintech-CN@ptglab.com

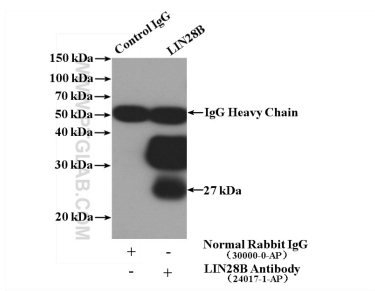
W: ptgcn.com

This product is exclusively available under Proteintech Group brand and is not available to purchase from any other manufacturer.

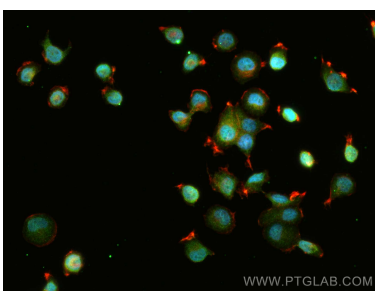
Selected Validation Data



Various lysates were subjected to SDS PAGE followed by western blot with 24017-1-AP (LIN28B antibody) at dilution of 1:1500 incubated at room temperature for 1.5 hours.



IP result of anti-LIN28B (IP:24017-1-AP, 4ug; Detection:24017-1-AP 1:500) with HEK-293 cells lysate 1480ug.



Immunofluorescent analysis of (4% PFA) fixed NCCIT cells using LIN28B antibody (24017-1-AP) at dilution of 1:400 and CoraLite®488-Conjugated Goat Anti-Rabbit IgG(H+L), CL594-Phalloidin (red).