

For Research Use Only

# ARMC2 Polyclonal antibody

Catalog Number: 24011-1-AP



## Basic Information

|   |  |   |
|---|--|---|
| <b>Catalog Number:</b><br>24011-1-AP        | <b>GenBank Accession Number:</b><br>BC030603       | <b>Purification Method:</b><br>Antigen Affinity purified                |
| <b>Source:</b><br>Rabbit                    | <b>GeneID (NCBI):</b><br>84071                     | <b>Recommended Dilutions:</b><br>WB: 1:500-1:3000<br>IF-Fro: 1:50-1:500 |
| <b>Isotype:</b><br>IgG                      | <b>UNIPROT ID:</b><br>Q8NENO                       |   |
| <b>Immunogen Catalog Number:</b><br>AG21162 | <b>Full Name:</b><br>armadillo repeat containing 2 |   |
|   | <b>Calculated MW:</b><br>867 aa, 97 kDa            |   |
|   | <b>Observed MW:</b><br>78 kDa, 97 kDa              |   |

## Applications

|  |   |
|--|---|
| <b>Tested Applications:</b><br>WB, IF-Fro, ELISA | <b>Positive Controls:</b>   |
| <b>Species Specificity:</b><br>human, mouse, rat | <b>WB :</b> HeLa cells, mouse testis tissue, rat testis tissue<br><b>IF-Fro :</b> mouse brain tissue, |

## Background Information

The ARMC2 protein (Armadillo Repeat Containing 2) is an evolutionarily conserved axonemal-related protein that plays a crucial role in the structure and function of cilia and flagella. It interacts with the kinesin-2 complex through its unique Armadillo repeat domain and acts as an adapter for the flagellar transport (IFT) process, responsible for transporting specific cargoes (such as the precursor proteins necessary for the construction of flagellar axons) from the cell body to the flagellar tip, which is essential for the assembly, maintenance, and signal transduction functions of the flagella. Its dysfunction is directly related to abnormal sperm flagellar morphology and movement disorders.

## Storage

**Storage:**  
Store at -20°C. Stable for one year after shipment.  
**Storage Buffer:**  
PBS with 0.02% sodium azide and 50% glycerol, pH7.3  
**Aliquoting is unnecessary for -20°C storage**

For technical support and original validation data for this product please contact:

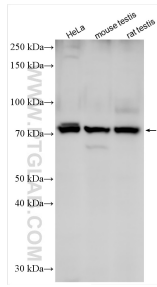
T: 4006900926

E: [Proteintech-CN@ptglab.com](mailto:Proteintech-CN@ptglab.com)

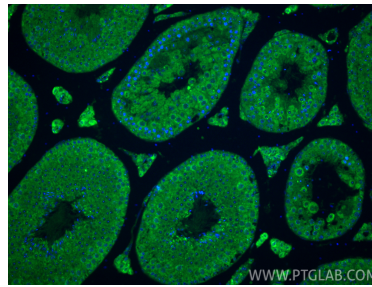
W: [ptgcn.com](http://ptgcn.com)

**This product is exclusively available under Proteintech Group brand and is not available to purchase from any other manufacturer.**

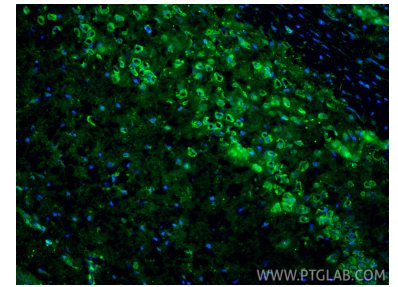
## Selected Validation Data



Various lysates were subjected to SDS PAGE followed by western blot with 24011-1-AP (ARMC2 antibody) at dilution of 1:1500 incubated at room temperature for 1.5 hours.



Immunofluorescent analysis of (4% PFA) fixed paraffin-embedded mouse testis tissue using ARMC2 antibody (24011-1-AP) at dilution of 1:200 and CoraLite®488-Conjugated Goat Anti-Rabbit IgG(H+L) (SA00013-2). Heat mediated antigen retrieval with Tris-EDTA buffer (pH 9.0).



Immunofluorescent analysis of (4% PFA) fixed frozen OCT-embedded mouse brain tissue using ARMC2 antibody (24011-1-AP) at dilution of 1:200 and CoraLite®488-Conjugated Goat Anti-Rabbit IgG(H+L) (SA00013-2).