

BARHL2 Polyclonal antibody

Catalog Number: 23976-1-AP

1 Publications

Basic Information

Catalog Number:

23976-1-AP

Size:

500 µg/ml

Source:

Rabbit

Isotype:

IgG

Immunogen Catalog Number:

AG21156

GenBank Accession Number:

BC126439

GeneID (NCBI):

343472

UNIPROT ID:

Q9NY43

Full Name:

BarH-like homeobox 2

Calculated MW:

387 aa, 42 kDa

Observed MW:

42-45 kDa

Purification Method:

Antigen Affinity purified

Recommended Dilutions:

WB 1:200-1:1000

IHC 1:20-1:200

IF/ICC 1:200-1:800

Applications

Tested Applications:

WB, IF/ICC, IHC, ELISA

Cited Applications:

WB, IF

Species Specificity:

human, mouse

Cited Species:

mouse

Note-IHC: suggested antigen retrieval with TE buffer pH 9.0; (*) Alternatively, antigen retrieval may be performed with citrate buffer pH 6.0

Positive Controls:

WB : HepG2 cells, NIH/3T3 cells

IHC : human testis tissue,

IF/ICC : HepG2 cells,

Background Information

BARHL2 also named as BarH like homeobox 2 is 279 amino acid protein, which contains 1 homeobox DNA-binding domain. BARHL2 localizes in nucleus and belongs to BAR homeobox family. BARHL2 as a transcription factor binds optimally to the DNA consensus sequence. Barx2 may differentially control the expression of L1 and other target genes during embryonic development. Barx2 is expressed in several smooth muscle-containing tissues, as well as skeletal muscle, brain, tongue and esophagus.

Notable Publications

Author	Pubmed ID	Journal	Application
Meiyang Li	38177329	Nat Aging	WB,IF

Storage

Storage:

Store at -20°C. Stable for one year after shipment.

Storage Buffer:

PBS with 0.02% sodium azide and 50% glycerol pH 7.3.

Aliquoting is unnecessary for -20°C storage

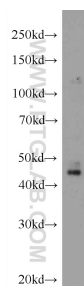
For technical support and original validation data for this product please contact:

T: 4006900926

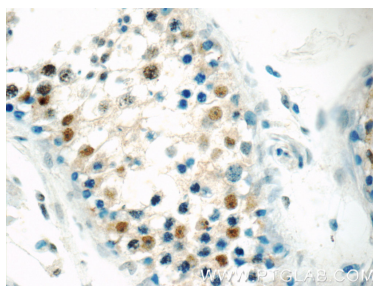
E: Proteintech-CN@ptglab.comW: ptgcn.com

This product is exclusively available under Proteintech Group brand and is not available to purchase from any other manufacturer.

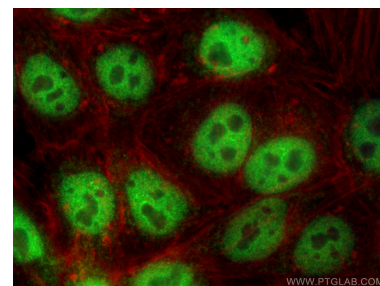
Selected Validation Data



HepG2 cells were subjected to SDS PAGE followed by western blot with 23976-1-AP (BARHL2 Antibody) at dilution of 1:300 incubated at room temperature for 1.5 hours.



Immunohistochemical analysis of paraffin-embedded human testis tissue slide using 23976-1-AP (BARHL2 Antibody) at dilution of 1:50 (under 40x lens).



Immunofluorescent analysis of (4% PFA) fixed HepG2 cells using BARHL2 antibody (23976-1-AP) at dilution of 1:400 and CoraLite®488-Conjugated AffiniPure Goat Anti-Rabbit IgG(H+L) (SA00013-2), CL594-Phalloidin (red).