

For Research Use Only

# BCL2L15 Polyclonal antibody, PBS Only

Catalog Number: 23975-1-PBS



## Basic Information

Catalog Number:

23975-1-PBS

Source:

Rabbit

Isotype:

IgG

Immunogen Catalog Number:

AG21155

GenBank Accession Number:

BC127719

GeneID (NCBI):

440603

UNIPROT ID:

Q5TBC7

Full Name:

BCL2-like 15

Calculated MW:

163 aa, 18 kDa

Purification Method:

Antigen Affinity purified

## Applications

Tested Applications:

IHC, IF/ICC, Indirect ELISA

Species Specificity:

human

## Background Information

B-cell lymphoma 2 (Bcl-2)-like protein 15 (BCL2L15), also known as BCL2 family kin (BFK), belongs to the BCL2 protein family, and appears to induce weak apoptosis and antagonize the pro-survival function of Bcl2 (PMID:32708974). In addition, studies reported BCL2L15 expression in the stomach, ovaries, bone marrow, spleen, and uterus (PMID:12700646).

## Storage

Storage:

Store at -80°C.

**The product is shipped with ice packs. Upon receipt, store it immediately at -80°C**

Storage Buffer:

PBS only, pH7.3

For technical support and original validation data for this product please contact:

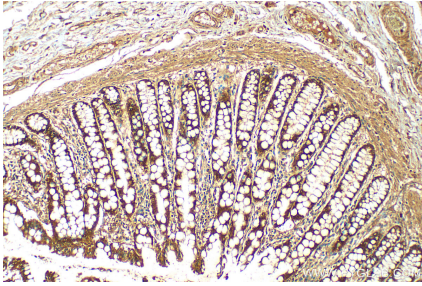
T: 4006900926

E: [Proteintech-CN@ptglab.com](mailto:Proteintech-CN@ptglab.com)

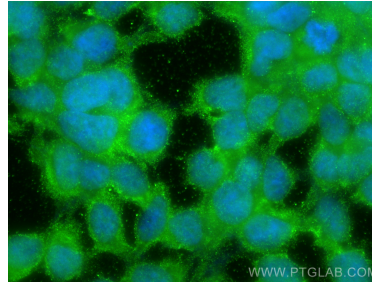
W: [ptgcn.com](http://ptgcn.com)

**This product is exclusively available under Proteintech Group brand and is not available to purchase from any other manufacturer.**

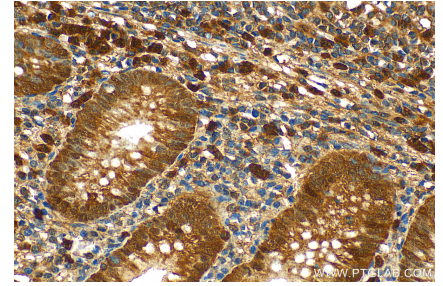
## Selected Validation Data



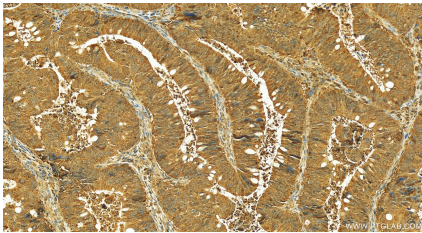
Immunohistochemical analysis of paraffin-embedded human colon tissue slide using 23975-1-AP (BCL2L15 antibody) at dilution of 1:200 (under 10x lens). Heat mediated antigen retrieval with Tris-EDTA buffer (pH 9.0). This data was developed using the same antibody clone with 23975-1-PBS in a different storage buffer formulation.



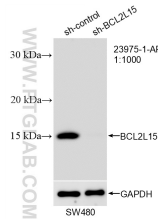
Immunofluorescent analysis of (-20°C Ethanol) fixed HEK-293 cells using BCL2L15 antibody (23975-1-AP) at dilution of 1:400 and CoraLite®488-Conjugated AffiniPure Goat Anti-Rabbit IgG(H+L). This data was developed using the same antibody clone with 23975-1-PBS in a different storage buffer formulation.



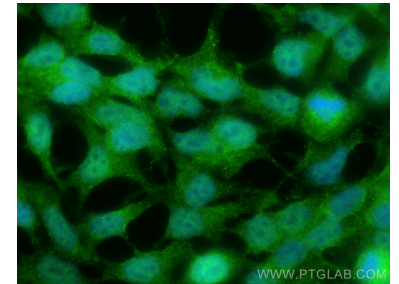
Immunohistochemical analysis of paraffin-embedded human appendicitis tissue slide using 23975-1-AP (BCL2L15 antibody) at dilution of 1:200 (under 40x lens). Heat mediated antigen retrieval with Tris-EDTA buffer (pH 9.0). This data was developed using the same antibody clone with 23975-1-PBS in a different storage buffer formulation.



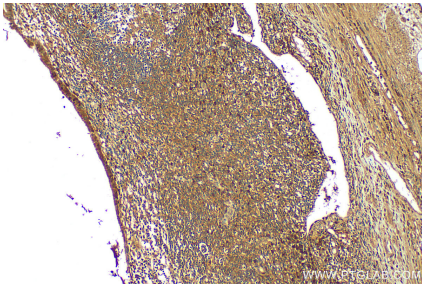
Immunohistochemical analysis of paraffin-embedded colon cancer tissue slide using 23975-1-AP (BCL2L15 antibody) at dilution of 1:200 (under 20x lens). Heat mediated antigen retrieval with Tris-EDTA buffer (pH 9.0). This data was developed using the same antibody clone with 23975-1-PBS in a different storage buffer formulation.



WB result of BCL2L15 antibody (23975-1-AP; 1:1000; incubated at room temperature for 1.5 hours) with sh-Control and sh-BCL2L15 transfected SW480 cells. This data was developed using the same antibody clone with 23975-1-PBS in a different storage buffer formulation.



Immunofluorescent analysis of (4% PFA) fixed HEK-293 cells using BCL2L15 antibody (23975-1-AP) at dilution of 1:400 and CoraLite®488-Conjugated AffiniPure Goat Anti-Rabbit IgG(H+L). This data was developed using the same antibody clone with 23975-1-PBS in a different storage buffer formulation.



Immunohistochemical analysis of paraffin-embedded human appendicitis tissue slide using 23975-1-AP (BCL2L15 antibody) at dilution of 1:200 (under 10x lens). Heat mediated antigen retrieval with Tris-EDTA buffer (pH 9.0). This data was developed using the same antibody clone with 23975-1-PBS in a different storage buffer formulation.