

For Research Use Only

BCL2L15 Polyclonal antibody

Catalog Number: 23975-1-AP

1 Publications



Basic Information

Catalog Number:

23975-1-AP

Size:

600 ug/ml

Source:

Rabbit

Isotype:

IgG

Immunogen Catalog Number:

AG21155

GenBank Accession Number:

BC127719

GeneID (NCBI):

440603

UNIPROT ID:

Q5TBC7

Full Name:

BCL2-like 15

Calculated MW:

163 aa, 18 kDa

Purification Method:

Antigen Affinity purified

Recommended Dilutions:

IHC 1:50-1:500

IF/ICC 1:200-1:800

Applications

Tested Applications:

IHC, IF/ICC, ELISA

Cited Applications:

IHC

Species Specificity:

human

Cited Species:

human

Note-IHC: suggested antigen retrieval with TE buffer pH 9.0; (*) Alternatively, antigen retrieval may be performed with citrate buffer pH 6.0

Positive Controls:

IHC : human colon tissue, human appendicitis tissue, human colon cancer tissue

IF/ICC : HEK-293 cells,

Background Information

B-cell lymphoma 2 (Bcl-2)-like protein 15 (BCL2L15), also known as BCL2 family kin (BFK), belongs to the BCL2 protein family, and appears to induce weak apoptosis and antagonize the pro-survival function of Bcl2 (PMID:32708974). In addition, studies reported BCL2L15 expression in the stomach, ovaries, bone marrow, spleen, and uterus (PMID:12700646).

Notable Publications

Author	Pubmed ID	Journal	Application
Suizi Zhou	39402558	J Transl Med	IHC

Storage

Storage:

Store at -20°C. Stable for one year after shipment.

Storage Buffer:

PBS with 0.02% sodium azide and 50% glycerol pH 7.3.

Aliquoting is unnecessary for -20°C storage

For technical support and original validation data for this product please contact:

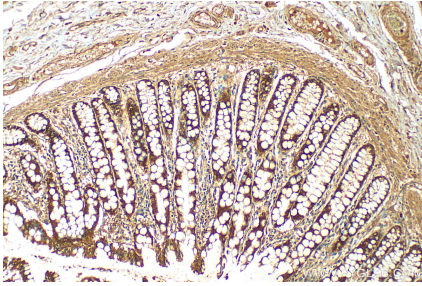
T: 4006900926

E: Proteintech-CN@ptglab.com

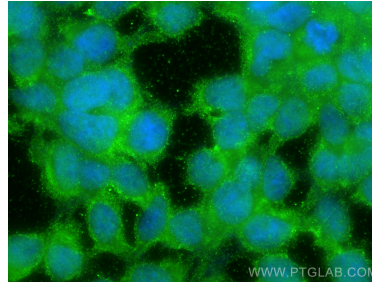
W: ptgcn.com

This product is exclusively available under Proteintech Group brand and is not available to purchase from any other manufacturer.

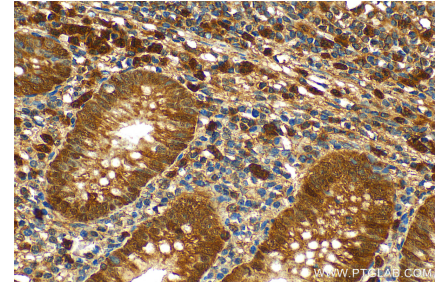
Selected Validation Data



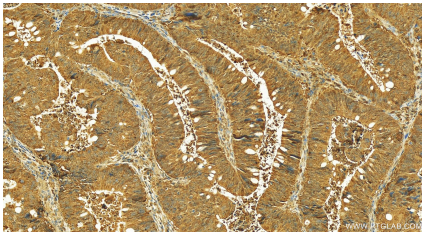
Immunohistochemical analysis of paraffin-embedded human colon tissue slide using 23975-1-AP (BCL2L15 antibody) at dilution of 1:200 (under 10x lens). Heat mediated antigen retrieval with Tris-EDTA buffer (pH 9.0).



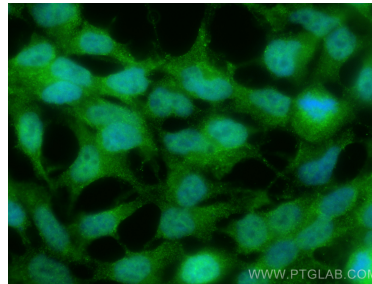
Immunofluorescent analysis of (-20°C Ethanol) fixed HEK-293 cells using BCL2L15 antibody (23975-1-AP) at dilution of 1:400 and CoraLite®488-Conjugated AffiniPure Goat Anti-Rabbit IgG(H+L).



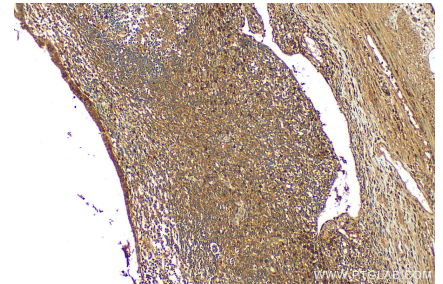
Immunohistochemical analysis of paraffin-embedded human appendicitis tissue slide using 23975-1-AP (BCL2L15 antibody) at dilution of 1:200 (under 40x lens). Heat mediated antigen retrieval with Tris-EDTA buffer (pH 9.0).



Immunohistochemical analysis of paraffin-embedded colon cancer slide using 23975-1-AP (BCL2L15 antibody) at dilution of 1:200 (under 20x lens). Heat mediated antigen retrieval with Tris-EDTA buffer (pH 9.0).



Immunofluorescent analysis of (4% PFA) fixed HEK-293 cells using BCL2L15 antibody (23975-1-AP) at dilution of 1:400 and CoraLite®488-Conjugated AffiniPure Goat Anti-Rabbit IgG(H+L).



Immunohistochemical analysis of paraffin-embedded human appendicitis tissue slide using 23975-1-AP (BCL2L15 antibody) at dilution of 1:200 (under 10x lens). Heat mediated antigen retrieval with Tris-EDTA buffer (pH 9.0).