

FAM158A Polyclonal antibody

Catalog Number: 23919-1-AP

Basic Information

Catalog Number: 23919-1-AP	GenBank Accession Number: BC002491	Purification Method: Antigen Affinity purified
Concentration: 500 ug/ml	GeneID (NCBI): 51016	Recommended Dilutions: WB 1:200-1:1000
Source: Rabbit	UNIPROT ID: Q9Y3B6	IHC 1:20-1:200
Isotype: IgG	Full Name: family with sequence similarity 158, member A	IF/ICC 1:50-1:500
Immunogen Catalog Number: AG20744	Calculated MW: 208 aa, 23 kDa	
	Observed MW: 23 kDa	

Applications

Tested Applications: WB, IHC, IF/ICC, ELISA	Positive Controls:
Species Specificity: human	WB : HEK-293 cells,
Note-IHC: suggested antigen retrieval with TE buffer pH 9.0; (*) Alternatively, antigen retrieval may be performed with citrate buffer pH 6.0	IHC : human pancreas tissue,
	IF/ICC : HEK-293 cells,

Background Information

UPF0172 protein FAM158A, also known as c14orf122 or CGI112, is a protein that in humans is encoded by the FAM158A gene located on chromosome 14q11.2. Human FAM158A and its paralogs in other species are part of the uncharacterized protein family UPF0172 family, which is a subset of the JAB1/Mov34/MPN/PAD-1 ubiquitin protease protein family. The MPN superfamily contributes to ubiquitination and de-ubiquitination activity within the cell. The UPF0172 subset no longer has a functional ubiquitination domain and the function is uncharacterized. Fam158a is nearly ubiquitously expressed throughout the human body. The homolog in mice also shows expression throughout the entire body. Several micro-arrays demonstrate the variable expression of Fam158a in response to other factors and in various cancer types. None of this information gives any indication of a specific function but the wide expression of the gene and its high conservation indicate that Fam158a plays an important role in cellular function.

Storage

Storage:
Store at -20°C. Stable for one year after shipment.
Storage Buffer:
PBS with 0.02% sodium azide and 50% glycerol pH 7.3.
 Aliquoting is unnecessary for -20°C storage

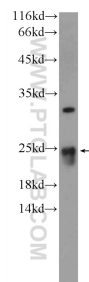
For technical support and original validation data for this product please contact:

T: 4006900926

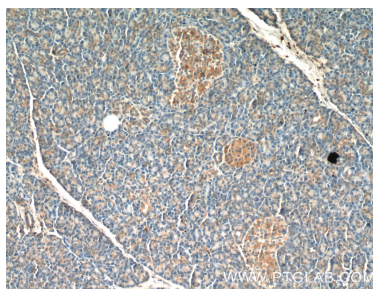
E: Proteintech-CN@ptglab.comW: ptgcn.com

This product is exclusively available under Proteintech Group brand and is not available to purchase from any other manufacturer.

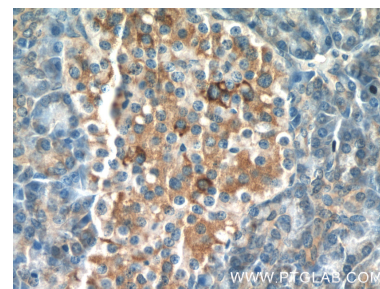
Selected Validation Data



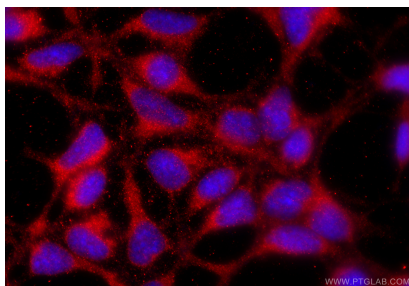
HEK-293 cells were subjected to SDS PAGE followed by western blot with 23919-1-AP (FAM158A Antibody) at dilution of 1:300 incubated at room temperature for 1.5 hours.



Immunohistochemical analysis of paraffin-embedded human pancreas tissue slide using 23919-1-AP (FAM158A Antibody) at dilution of 1:50 (under 10x lens).



Immunohistochemical analysis of paraffin-embedded human pancreas tissue slide using 23919-1-AP (FAM158A Antibody) at dilution of 1:50 (under 40x lens).



Immunofluorescent analysis of (-20°C Ethanol) fixed HEK-293 cells using FAM158A antibody (23919-1-AP) at dilution of 1:200 and CoraLite®594-Conjugated Goat Anti-Rabbit IgG(H+L) (SA00013-4).