

For Research Use Only

# CEBPD Polyclonal antibody, PBS Only

Catalog Number: 23895-1-PBS



## Basic Information

<b>Catalog Number:</b> 23895-1-PBS	<b>GenBank Accession Number:</b> BC105109	<b>Purification Method:</b> Antigen Affinity purified
<b>Concentration:</b> 1 mg/ml	<b>GeneID (NCBI):</b> 1052	
<b>Source:</b> Rabbit	<b>UNIPROT ID:</b> P49716	
<b>Isotype:</b> IgG	<b>Full Name:</b> CCAAT/enhancer binding protein (C/EBP), delta	
<b>Immunogen Catalog Number:</b> AG20953	<b>Calculated MW:</b> 269 aa, 28 kDa	
	<b>Observed MW:</b> 28-36 kDa	

## Applications

**Tested Applications:**  
WB, Indirect ELISA

**Species Specificity:**  
human, mouse

## Background Information

CEBPD, a versatile transcription factor, belongs to the C/EBP family that comprises three parts: an N-terminal transactivating region, a basic DNA binding region, and a C-terminal leucine zipper domain (PMID: 17170124). It presents as a regulator in terms of cell differentiation, proliferation, motility, growth arrest, and cell death (PMID: 24155666). The apparent molecular weight is larger than the calculated molecular weight of 28 kDa, which is likely due to posttranslational modification, presumably by ubiquitination.

## Storage

**Storage:**  
Store at -80°C.  
**The product is shipped with ice packs. Upon receipt, store it immediately at -80°C**

**Storage Buffer:**  
PBS only, pH7.3

For technical support and original validation data for this product please contact:

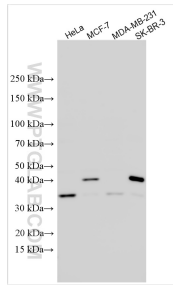
T: 4006900926

E: [Proteintech-CN@ptglab.com](mailto:Proteintech-CN@ptglab.com)

W: [ptgcn.com](http://ptgcn.com)

**This product is exclusively available under Proteintech Group brand and is not available to purchase from any other manufacturer.**

## Selected Validation Data



Various lysates were subjected to SDS PAGE followed by western blot with 23895-1-AP (CEBPD antibody) at dilution of 1:1000 incubated at room temperature for 1.5 hours. This data was developed using the same antibody clone with 23895-1-PBS in a different storage buffer formulation.