

For Research Use Only

# CEP55 Polyclonal antibody

Catalog Number: 23891-1-AP

Featured Product

13 Publications



## Basic Information

### Catalog Number:

23891-1-AP

### Concentration:

1000 ug/ml

### Source:

Rabbit

### Isotype:

IgG

### Immunogen Catalog Number:

AG20940

### GenBank Accession Number:

BC008947

### GeneID (NCBI):

55165

### UNIPROT ID:

Q53EZ4

### Full Name:

centrosomal protein 55kDa

### Calculated MW:

54 kDa

### Observed MW:

47-55 kDa

### Purification Method:

Antigen Affinity purified

### Recommended Dilutions:

WB 1:500-1:2000

IP 0.5-4.0 ug for 1.0-3.0 mg of total protein lysate

IHC 1:20-1:200

IF/ICC 1:200-1:800

## Applications

### Tested Applications:

WB, IHC, IF/ICC, IP, ELISA

### Cited Applications:

WB, IHC, IF, IP

### Species Specificity:

human, mouse, rat

### Cited Species:

human, mouse

**Note-IHC: suggested antigen retrieval with TE buffer pH 9.0; (\*) Alternatively, antigen retrieval may be performed with citrate buffer pH 6.0**

### Positive Controls:

**WB** : HEK-293 cells, HeLa cells, human testis tissue, mouse testis tissue, Jurkat cells

**IP** : mouse testis tissue,

**IHC** : human testis tissue,

**IF/ICC** : HepG2 cells,

## Background Information

CEP55, also named as C10orf3 and URCC6, is a 55 kDa protein which located in the centrosome in interphase cells and recruited to the midbody during cytokinesis, is essential for completion of cell abscission. It plays a role in mitotic exit and cytokinesis. CEP55 has two isoforms with the MW of 47 and 55 kDa.

## Notable Publications

Author	Pubmed ID	Journal	Application
Zewei Tu	36096781	BMC Cancer	WB
Zi Ye	32565973	Oncol Lett	IHC
Kun Gao	29743530	Cell Death Dis	WB,IP,IF

## Storage

### Storage:

Store at -20°C. Stable for one year after shipment.

### Storage Buffer:

PBS with 0.02% sodium azide and 50% glycerol pH 7.3.

Aliquoting is unnecessary for -20°C storage

For technical support and original validation data for this product please contact:

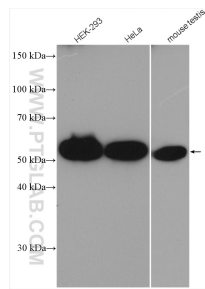
T: 4006900926

E: [Proteintech-CN@ptglab.com](mailto:Proteintech-CN@ptglab.com)

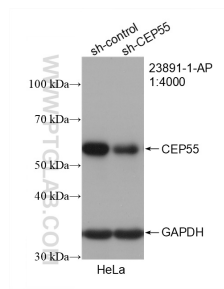
W: [ptgcn.com](http://ptgcn.com)

This product is exclusively available under Proteintech Group brand and is not available to purchase from any other manufacturer.

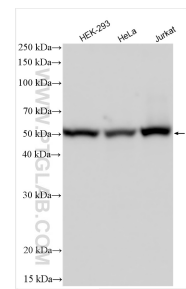
## Selected Validation Data



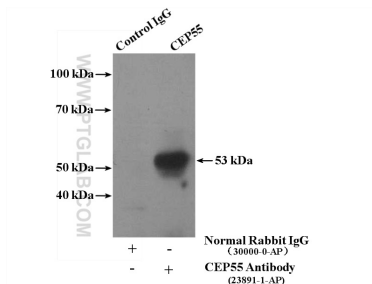
Various lysates were subjected to SDS PAGE followed by western blot with 23891-1-AP (CEP55 antibody) at dilution of 1:1000 incubated at room temperature for 1.5 hours.



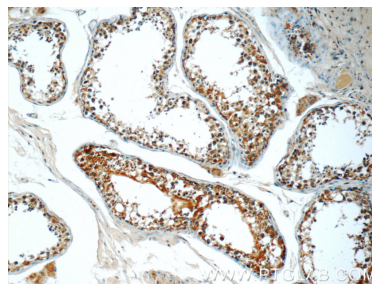
WB result of CEP55 antibody (23891-1-AP; 1:4000; incubated at room temperature for 1.5 hours) with sh-Control and sh-CEP55 transfected HeLa cells.



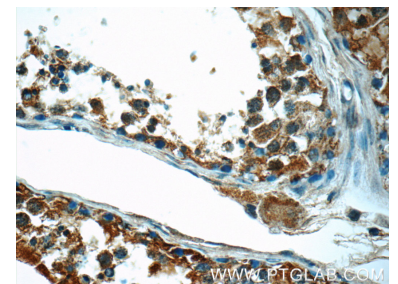
Various lysates were subjected to SDS PAGE followed by western blot with 23891-1-AP (CEP55 antibody) at dilution of 1:4000 incubated at room temperature for 1.5 hours.



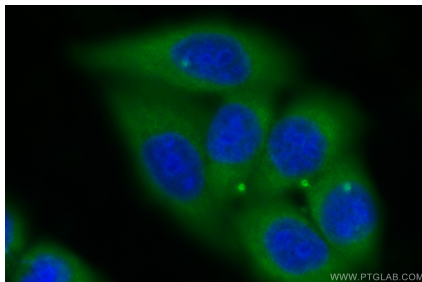
IP result of anti-CEP55 (IP:23891-1-AP, 4ug; Detection:23891-1-AP 1:500) with mouse testis tissue lysate 4000ug.



Immunohistochemical analysis of paraffin-embedded human testis tissue slide using 23891-1-AP (CEP55 Antibody) at dilution of 1:50 (under 10x lens).



Immunohistochemical analysis of paraffin-embedded human testis tissue slide using 23891-1-AP (CEP55 Antibody) at dilution of 1:50 (under 40x lens).



Immunofluorescent analysis of (-20°C Ethanol) fixed HepG2 cells using CEP55 antibody (23891-1-AP) at dilution of 1:400 and CoraLite®488-Conjugated AffiniPure Goat Anti-Rabbit IgG(H+L) (SA00013-2).