

For Research Use Only

ODF2L Polyclonal antibody

Catalog Number: 23887-1-AP

Featured Product

2 Publications



Basic Information

Catalog Number:

23887-1-AP

Size:

400 µg/ml

Source:

Rabbit

Isotype:

IgG

Immunogen Catalog Number:

AG20897

GenBank Accession Number:

BC009779

GeneID (NCBI):

57489

UNIPROT ID:

Q9ULJ1

Full Name:

outer dense fiber of sperm tails 2-like

Calculated MW:

513 aa, 60 kDa

Observed MW:

60-74 kDa

Purification Method:

Antigen Affinity purified

Recommended Dilutions:

WB 1:500-1:3000

Applications

Tested Applications:

WB, ELISA

Cited Applications:

WB, IF

Species Specificity:

human, mouse, rat

Cited Species:

human

Positive Controls:

WB : HEK-293 cells, mouse kidney tissue, rat kidney tissue

Background Information

ODF2L, also named as KIAA1229, has many isoforms with MW 60-80 kDa. The function of ODF2L (Outer dense fiber protein 2-like) remains largely unknown.

Notable Publications

| Author | Pubmed ID | Journal | Application |
|---------------|-----------|---------------|-------------|
| Jie Li | 36378528 | J Clin Invest | WB |
| Paul de Saram | 28775150 | J Cell Sci | WB,IF |

Storage

Storage:

Store at -20°C. Stable for one year after shipment.

Storage Buffer:

PBS with 0.02% sodium azide and 50% glycerol pH 7.3.

Aliquoting is unnecessary for -20°C storage

For technical support and original validation data for this product please contact:

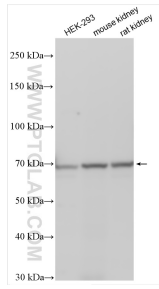
T: 4006900926

E: Proteintech-CN@ptglab.com

W: ptgcn.com

This product is exclusively available under Proteintech Group brand and is not available to purchase from any other manufacturer.

Selected Validation Data



Various lysates were subjected to SDS PAGE followed by western blot with 23887-1-AP (ODF2L antibody) at dilution of 1:1500 incubated at room temperature for 1.5 hours.