

For Research Use Only

PPP2R5E Polyclonal antibody

Catalog Number: 23885-1-AP **1 Publications**



Basic Information

Catalog Number: 23885-1-AP	GenBank Accession Number: BC092477	Purification Method: Antigen Affinity purified
Size: 500 µg/ml	GeneID (NCBI): 5529	Recommended Dilutions: WB 1:500-1:2000 IHC 1:20-1:200 IF 1:20-1:200
Source: Rabbit	UNIPROT ID: Q16537	
Isotype: IgG	Full Name: protein phosphatase 2, regulatory subunit B', epsilon isoform	
Immunogen Catalog Number: AG20891	Calculated MW: 467 aa, 55 kDa	
	Observed MW: 51 kDa	

Applications

Tested Applications: IF/ICC, IHC, WB, ELISA	Positive Controls: WB : HeLa cells, IHC : human cervical cancer tissue, IF : HeLa cells,
Cited Applications: WB	
Species Specificity: human	
Cited Species: mouse	
Note-IHC: suggested antigen retrieval with TE buffer pH 9.0; (*) Alternatively, antigen retrieval may be performed with citrate buffer pH 6.0	

Background Information

Notable Publications

Author	Pubmed ID	Journal	Application
He-Zhou Huang	38011644	Protein Cell	WB

Storage

Storage:
Store at -20°C. Stable for one year after shipment.
Storage Buffer:
PBS with 0.02% sodium azide and 50% glycerol pH 7.3.
Aliquoting is unnecessary for -20°C storage

For technical support and original validation data for this product please contact:

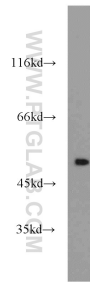
T: 4006900926

E: Proteintech-CN@ptglab.com

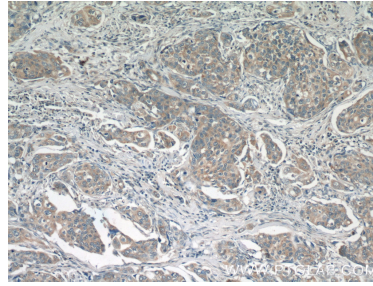
W: ptgcn.com

This product is exclusively available under Proteintech Group brand and is not available to purchase from any other manufacturer.

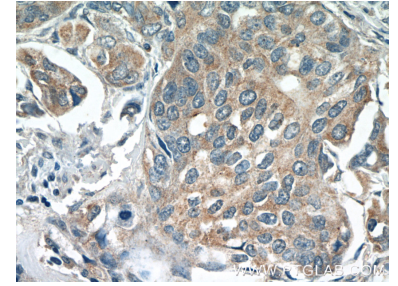
Selected Validation Data



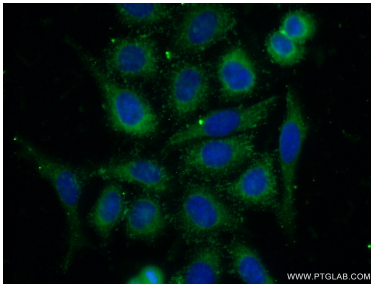
HeLa cells were subjected to SDS PAGE followed by western blot with 23885-1-AP (PPP2R5E antibody) at dilution of 1:1000 incubated at room temperature for 1.5 hours.



Immunohistochemical analysis of paraffin-embedded human cervical cancer tissue slide using 23885-1-AP (PPP2R5E Antibody) at dilution of 1:50 (under 10x lens).



Immunohistochemical analysis of paraffin-embedded human cervical cancer tissue slide using 23885-1-AP (PPP2R5E Antibody) at dilution of 1:50 (under 40x lens).



Immunofluorescent analysis of (-20°C Ethanol) fixed HeLa cells using 23885-1-AP (PPP2R5E antibody) at dilution of 1:50 and Alexa Fluor 488-conjugated AffiniPure Goat Anti-Rabbit IgG(H+L).