

For Research Use Only

MRPL33 Polyclonal antibody

Catalog Number: 23870-1-AP



Basic Information

Catalog Number: 23870-1-AP	GenBank Accession Number: BC009475	Purification Method: Antigen Affinity purified
Size: 600 µg/ml	GeneID (NCBI): 9553	Recommended Dilutions: IHC 1:50-1:500 IF 1:10-1:100
Source: Rabbit	UNIPROT ID: O75394	
Isotype: IgG	Full Name: mitochondrial ribosomal protein L33	
Immunogen Catalog Number: AG20921	Calculated MW: 65 aa, 8 kDa	

Applications

Tested Applications: IF/ICC, IHC, ELISA	Positive Controls: IHC : human kidney tissue, IF : HepG2 cells,
Species Specificity: human	

Note-IHC: suggested antigen retrieval with TE buffer pH 9.0; (*) Alternatively, antigen retrieval may be performed with citrate buffer pH 6.0

Background Information

MRPL33 is a mitochondrial ribosomal protein. Mammalian mitochondrial ribosomal proteins are encoded by nuclear genes and help in protein synthesis within the mitochondrion.

Storage

Storage:
Store at -20°C. Stable for one year after shipment.
Storage Buffer:
PBS with 0.02% sodium azide and 50% glycerol pH 7.3.
Aliquoting is unnecessary for -20°C storage

For technical support and original validation data for this product please contact:

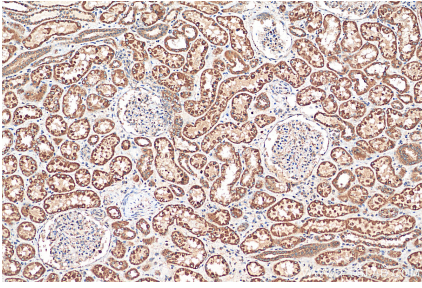
T: 4006900926

E: Proteintech-CN@ptglab.com

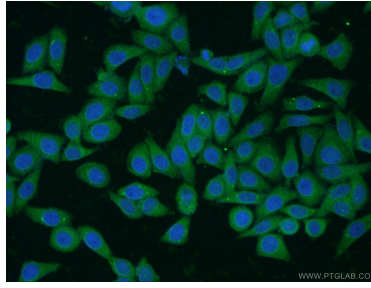
W: ptgcn.com

This product is exclusively available under Proteintech Group brand and is not available to purchase from any other manufacturer.

Selected Validation Data



Immunohistochemical analysis of paraffin-embedded human kidney tissue slide using 23870-1-AP (MRPL33 antibody) at dilution of 1:200 (under 10x lens). Heat mediated antigen retrieval with Tris-EDTA buffer (pH 9.0).



Immunofluorescent analysis of HepG2 cells using 23870-1-AP (MRPL33 antibody) at dilution of 1:25 and Alexa Fluor 488-conjugated AffiniPure Goat Anti-Rabbit IgG(H+L).