

For Research Use Only

# NARG1 Polyclonal antibody

Catalog Number: 23845-1-AP



## Basic Information

<b>Catalog Number:</b> 23845-1-AP	<b>GenBank Accession Number:</b> BC093928	<b>Purification Method:</b> Antigen Affinity purified
<b>Size:</b> 400 µg/ml	<b>GeneID (NCBI):</b> 80155	<b>Recommended Dilutions:</b> WB 1:200-1:1000 IHC 1:250-1:1000 IF 1:50-1:500
<b>Source:</b> Rabbit	<b>UNIPROT ID:</b> Q9BXJ9	
<b>Isotype:</b> IgG	<b>Full Name:</b> NMDA receptor regulated 1	
<b>Immunogen Catalog Number:</b> AG20842	<b>Calculated MW:</b> 866 aa, 101 kDa	
	<b>Observed MW:</b> 95-100 kDa	

## Applications

**Tested Applications:**  
IF/ICC, IHC, WB, ELISA

**Species Specificity:**  
human, mouse

**Note-IHC: suggested antigen retrieval with TE buffer pH 9.0; (\*) Alternatively, antigen retrieval may be performed with citrate buffer pH 6.0**

**Positive Controls:**

**WB :** HeLa cells, HEK-293 cells

**IHC :** human stomach cancer tissue, mouse kidney tissue

**IF :** HeLa cells,

## Background Information

NAA15 (N-alpha-acetyltransferase 15) is a subunit of both the NatA and NatE complexes, and its role is to position the catalytic subunits in close vicinity to the nascent polypeptides (PMID: 33557580). Human NAA15 encodes an 866 amino acid (~105 kDa) protein, NAA15, containing tetratricopeptide repeat domains and a putative bipartite nuclear localization signal (PMID: 29656860). NAA15 was implicated in human disease and loss-of-function NAA15 variants in large cohorts of patients with autism spectrum disorder and/or ID (PMID: 33103328).

## Storage

**Storage:**

Store at -20°C. Stable for one year after shipment.

**Storage Buffer:**

PBS with 0.02% sodium azide and 50% glycerol pH 7.3.

Aliquoting is unnecessary for -20°C storage

For technical support and original validation data for this product please contact:

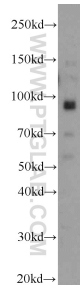
T: 4006900926

E: Proteintech-CN@ptglab.com

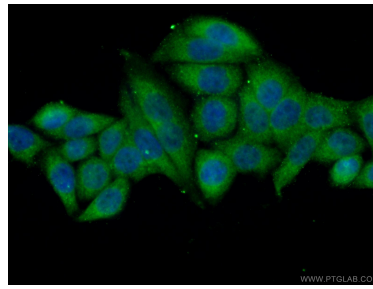
W: ptgcn.com

**This product is exclusively available under Proteintech Group brand and is not available to purchase from any other manufacturer.**

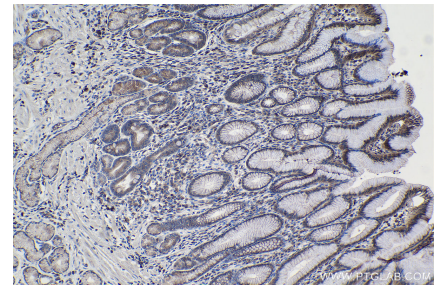
## Selected Validation Data



HeLa cells were subjected to SDS PAGE followed by western blot with 23845-1-AP (NARG1 antibody) at dilution of 1:300 incubated at room temperature for 1.5 hours.



Immunofluorescent analysis of (10% Formaldehyde) fixed HeLa cells using 23845-1-AP (NARG1 antibody) at dilution of 1:50 and Alexa Fluor 488-conjugated AffiniPure Goat Anti-Rabbit IgG(H+L).



Immunohistochemical analysis of paraffin-embedded human stomach cancer tissue slide using 23845-1-AP (NARG1 antibody) at dilution of 1:500 (under 10x lens). Heat mediated antigen retrieval with Tris-EDTA buffer (pH 9.0).