

For Research Use Only

# NAT8L Polyclonal antibody, PBS Only

Catalog Number: 23841-1-PBS



## Basic Information

Catalog Number:

23841-1-PBS

Size:

1 mg/ml

Source:

Rabbit

Isotype:

IgG

Immunogen Catalog Number:

AG20832

GenBank Accession Number:

BC103748

GeneID (NCBI):

339983

UNIPROT ID:

Q8N9F0

Full Name:

N-acetyltransferase 8-like (GCN5-related, putative)

Calculated MW:

134 aa, 15 kDa

Observed MW:

48 kDa

Purification Method:

Antigen Affinity purified

## Applications

Tested Applications:

WB, IF/ICC, Indirect ELISA

Species Specificity:

human, mouse, rat

## Background Information

NAT8L (N-acetyltransferase 8-Like) catalyzes the formation of N-acetyl aspartate (NAA) from acetyl-CoA and aspartate. In the brain, NAA delivers the acetate moiety to synthesize acetyl-CoA, which is further used for fatty acid generation (PMID: 24155240). NAT8L modulation may impinge on the metabolic reprogramming of cancer cells (PMID: 36580805). The calculated MW of NAT8L is around 33 kDa, and the observed MW is around 45 kDa.

## Storage

Storage:

Store at -80°C.

**The product is shipped with ice packs. Upon receipt, store it immediately at -80°C**

Storage Buffer:

PBS Only

For technical support and original validation data for this product please contact:

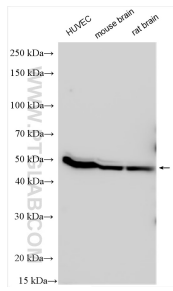
T: 4006900926

E: [Proteintech-CN@ptglab.com](mailto:Proteintech-CN@ptglab.com)

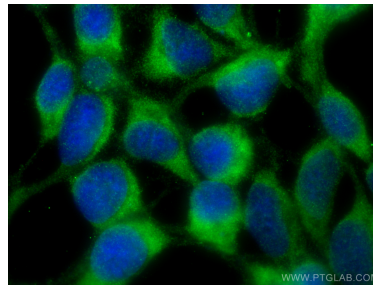
W: [ptgcn.com](http://ptgcn.com)

**This product is exclusively available under Proteintech Group brand and is not available to purchase from any other manufacturer.**

## Selected Validation Data



Various lysates were subjected to SDS PAGE followed by western blot with 23841-1-AP (NAT8L antibody) at dilution of 1:1000 incubated at room temperature for 1.5 hours. This data was developed using the same antibody clone with 23841-1-PBS in a different storage buffer formulation.



Immunofluorescent analysis of (-20°C Ethanol) fixed HEK-293 cells using NAT8L antibody (23841-1-AP) at dilution of 1:400 and CoraLite® 488-Conjugated AffiniPure Goat Anti-Rabbit IgG(H+L) (SA00013-2). This data was developed using the same antibody clone with 23841-1-PBS in a different storage buffer formulation.