

For Research Use Only

Cathepsin G Polyclonal antibody

Catalog Number: 23840-1-AP

3 Publications



Basic Information

Catalog Number:

23840-1-AP

Size:

750 µg/ml

Source:

Rabbit

Isotype:

IgG

Immunogen Catalog Number:

AG20818

GenBank Accession Number:

BC014460

GeneID (NCBI):

1511

UNIPROT ID:

P08311

Full Name:

cathepsin G

Calculated MW:

29 kDa

Observed MW:

29 kDa, 35 kDa

Purification Method:

Antigen affinity purification

Recommended Dilutions:

WB 1:500-1:1000

Applications

Tested Applications:

WB, ELISA

Cited Applications:

WB

Species Specificity:

human

Cited Species:

human

Positive Controls:

WB : MCF-7 cells, MDA-MB-453s cells

Background Information

CTSG(Cathepsin G) is also named as CTLA, CG, MGC23078, Catg and belongs to the peptidase S1 family. It may participate in the killing and digestion of engulfed pathogens, and in connective tissue remodeling at sites of inflammation. CTSG may also play a role in the progression to heart failure by activating angiotensin II, leading to detrimental effects on the heart. The full length protein contains 255 amino acid and has a signal peptide, a propeptide and a glycosylation site.

Notable Publications

Author	Pubmed ID	Journal	Application
Yun Chen	35935989	Front Immunol	WB
Yansen Xiao	33450198	Cancer Cell	WB
Caroline Schoenherr	31826021	PLoS One	

Storage

Storage:

Store at -20°C. Stable for one year after shipment.

Storage Buffer:

PBS with 0.02% sodium azide and 50% glycerol pH 7.3.

Aliquoting is unnecessary for -20°C storage

For technical support and original validation data for this product please contact:

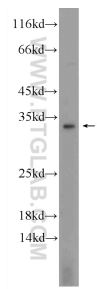
T: 4006900926

E: Proteintech-CN@ptglab.com

W: ptgcn.com

This product is exclusively available under Proteintech Group brand and is not available to purchase from any other manufacturer.

Selected Validation Data



MCF-7 cells were subjected to SDS PAGE followed by western blot with 23840-1-AP (Cathepsin G antibody at dilution of 1:600 incubated at room temperature for 1.5 hours.