

For Research Use Only

# RSRC1 Polyclonal antibody, PBS Only

Catalog Number: 23826-1-PBS

Featured Product



## Basic Information

<b>Catalog Number:</b> 23826-1-PBS	<b>GenBank Accession Number:</b> BC006982	<b>Purification Method:</b> Antigen Affinity purified
<b>Size:</b> 1 mg/ml	<b>GeneID (NCBI):</b> 51319	
<b>Source:</b> Rabbit	<b>UNIPROT ID:</b> Q961Z7	
<b>Isotype:</b> IgG	<b>Full Name:</b> arginine/serine-rich coiled-coil 1	
<b>Immunogen Catalog Number:</b> AG20604	<b>Calculated MW:</b> 334 aa, 39 kDa	
	<b>Observed MW:</b> 38 kDa, 50 kDa	

## Applications

**Tested Applications:**  
WB, IHC, IF/ICC, Indirect ELISA

**Species Specificity:**  
human

## Background Information

RSRC1, also named as SRRP53, is a novel SR-related protein of an apparent molecular mass of 53 kDa (45-53 kDa). It is isolated in a gene trap screen that identifies proteins which localize to the nuclear speckles. RSRC1 plays a role in pre-mRNA splicing and constitutive.

## Storage

**Storage:**  
Store at -80°C.  
**The product is shipped with ice packs. Upon receipt, store it immediately at -80°C**

**Storage Buffer:**  
PBS Only

For technical support and original validation data for this product please contact:

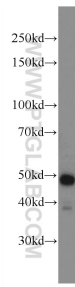
T: 4006900926

E: [Proteintech-CN@ptglab.com](mailto:Proteintech-CN@ptglab.com)

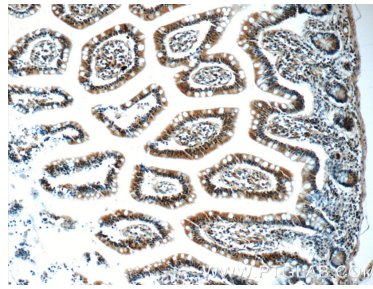
W: [ptgcn.com](http://ptgcn.com)

**This product is exclusively available under Proteintech Group brand and is not available to purchase from any other manufacturer.**

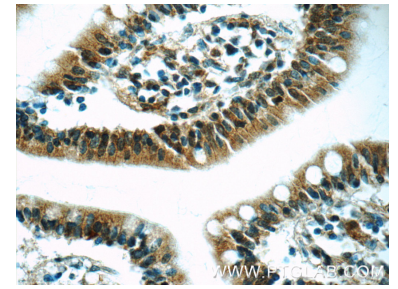
## Selected Validation Data



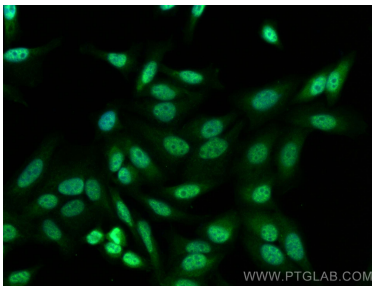
HeLa cells were subjected to SDS PAGE followed by western blot with 23826-1-AP (RSC1 Antibody) at dilution of 1:1500 incubated at room temperature for 1.5 hours. This data was developed using the same antibody clone with 23826-1-PBS in a different storage buffer formulation.



Immunohistochemical analysis of paraffin-embedded human small intestine tissue slide using 23826-1-AP (RSC1 Antibody) at dilution of 1:50 (under 10x lens). This data was developed using the same antibody clone with 23826-1-PBS in a different storage buffer formulation.



Immunohistochemical analysis of paraffin-embedded human small intestine tissue slide using 23826-1-AP (RSC1 Antibody) at dilution of 1:50 (under 40x lens). This data was developed using the same antibody clone with 23826-1-PBS in a different storage buffer formulation.



Immunofluorescent analysis of (4% PFA) fixed HepG2 cells using RSC1 antibody (23826-1-AP) at dilution of 1:400 and Coralite®488-Conjugated AffiniPure Goat Anti-Rabbit IgG(H+L) (SA00013-2). This data was developed using the same antibody clone with 23826-1-PBS in a different storage buffer formulation.