

For Research Use Only

# Kallikrein 7 Polyclonal antibody

Catalog Number: 23810-1-AP



## Basic Information

Catalog Number:

23810-1-AP

Concentration:

400 ug/ml

Source:

Rabbit

Isotype:

IgG

Immunogen Catalog Number:

AG20760

GenBank Accession Number:

BC032005

GeneID (NCBI):

5650

UNIPROT ID:

P49862

Full Name:

kallikrein-related peptidase 7

Calculated MW:

28 kDa

Observed MW:

27-30 kDa

Purification Method:

Antigen Affinity purified

Recommended Dilutions:

WB: 1:1000-1:6000

IF/ICC: 1:50-1:500

## Applications

Tested Applications:

WB, IF/ICC, ELISA

Species Specificity:

human, mouse, rat

Positive Controls:

WB : mouse skin tissue, rat skin tissue

IF/ICC : A431 cells,

## Background Information

Kallikrein-7 (KLK7), also known as SCCE, PRSS6, is a member of the kallikrein subfamily of serine proteases involved in various enzymatic processes. KLK7 is abundantly expressed in the skin and is expressed by keratinocytes in the epidermis (PMID: 10974542).

## Storage

Storage:

Store at -20°C. Stable for one year after shipment.

Storage Buffer:

PBS with 0.02% sodium azide and 50% glycerol, pH7.3

Aliquoting is unnecessary for -20°C storage

For technical support and original validation data for this product please contact:

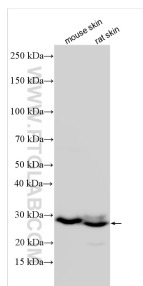
T: 4006900926

E: [Proteintech-CN@ptglab.com](mailto:Proteintech-CN@ptglab.com)

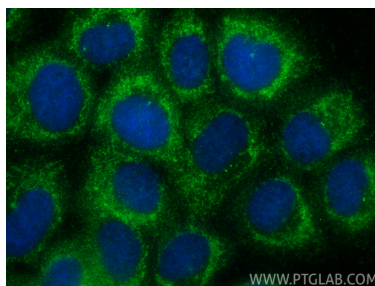
W: [ptgcn.com](http://ptgcn.com)

This product is exclusively available under Proteintech Group brand and is not available to purchase from any other manufacturer.

## Selected Validation Data



Various lysates were subjected to SDS PAGE followed by western blot with 23810-1-AP (Kallikrein 7 antibody) at dilution of 1:3000 incubated at room temperature for 1.5 hours.



Immunofluorescent analysis of (-20°C Methanol) fixed A431 cells using Kallikrein 7 antibody (23810-1-AP) at dilution of 1:200 and CoraLite®488-Conjugated Goat Anti-Rabbit IgG(H+L) (SA00013-2).