

For Research Use Only

# FATE1 Polyclonal antibody

Catalog Number: 23809-1-AP



## Basic Information

<b>Catalog Number:</b> 23809-1-AP	<b>GenBank Accession Number:</b> BC022064	<b>Purification Method:</b> Antigen affinity purification
<b>Size:</b> 600 µg/ml	<b>GeneID (NCBI):</b> 89885	<b>Recommended Dilutions:</b> WB 1:500-1:1000
<b>Source:</b> Rabbit	<b>UNIPROT ID:</b> Q969F0	
<b>Isotype:</b> IgG	<b>Full Name:</b> fetal and adult testis expressed 1	
<b>Immunogen Catalog Number:</b> AG20757	<b>Calculated MW:</b> 21 kDa	
	<b>Observed MW:</b> 21 kDa	

## Applications

<b>Tested Applications:</b> WB, ELISA	<b>Positive Controls:</b> WB : human testis tissue, mouse testis tissue
<b>Species Specificity:</b> human, mouse	

## Background Information

FATE1, also named as Fetal and adult testis expressed transcript protein, express predominantly in testis, with some expression in lung, heart, kidney, adrenal gland and whole brain. FATE might represent a novel target gene of SF-1 in testicular differentiation and germ cell development. FATE1 also involves in the regulation of a wide variety of cellular processes, including the cell cycle, immune responses, signaling cascades and developmental events through target proteins, such as cyclins, cyclin-dependent kinase inhibitors.

## Storage

**Storage:**  
Store at -20°C. Stable for one year after shipment.  
**Storage Buffer:**  
PBS with 0.02% sodium azide and 50% glycerol pH 7.3.  
Aliquoting is unnecessary for -20°C storage

For technical support and original validation data for this product please contact:

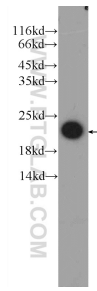
T: 4006900926

E: [Proteintech-CN@ptglab.com](mailto:Proteintech-CN@ptglab.com)

W: [ptgcn.com](http://ptgcn.com)

This product is exclusively available under Proteintech Group brand and is not available to purchase from any other manufacturer.

## Selected Validation Data



human testis tissue were subjected to SDS PAGE followed by western blot with 23809-1-AP (FATE1 Antibody) at dilution of 1:800 incubated at room temperature for 1.5 hours.