

ANGPTL8/Betatrophin Polyclonal antibody

Catalog Number: 23792-1-AP

1 Publications

Basic Information

Catalog Number:

23792-1-AP

Size:

600 µg/ml

Source:

Rabbit

Isotype:

IgG

Immunogen Catalog Number:

AG20698

GenBank Accession Number:

BC146552

GeneID (NCBI):

55908

UNIPROT ID:

Q6UXH0

Full Name:

hepatocellular carcinoma-associated gene TD26

Calculated MW:

251 aa, 28 kDa

Purification Method:

Antigen affinity purification

Recommended Dilutions:

IHC 1:20-1:200

Applications

Tested Applications:

IHC, ELISA

Cited Applications:

WB

Species Specificity:

human, mouse

Cited Species:

mouse

Note-IHC: suggested antigen retrieval with TE buffer pH 9.0; (*) Alternatively, antigen retrieval may be performed with citrate buffer pH 6.0

Positive Controls:

IHC : human liver cancer tissue, human liver tissue

Background Information

Notable Publications

Author	Pubmed ID	Journal	Application
Qi Guo	36142528	Int J Mol Sci	WB

Storage

Storage:

Store at -20°C. Stable for one year after shipment.

Storage Buffer:

PBS with 0.02% sodium azide and 50% glycerol pH 7.3.

Aliquoting is unnecessary for -20°C storage

For technical support and original validation data for this product please contact:

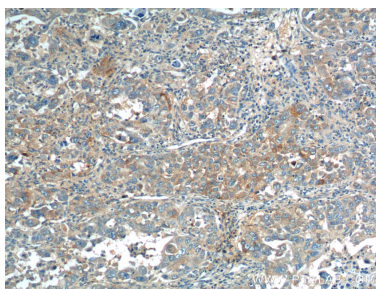
T: 4006900926

E: Proteintech-CN@ptglab.com

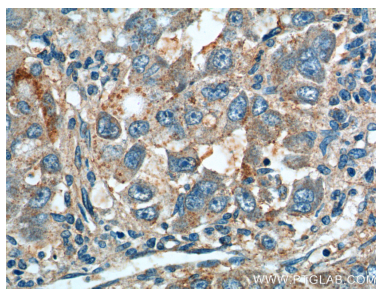
W: ptgcn.com

This product is exclusively available under Proteintech Group brand and is not available to purchase from any other manufacturer.

Selected Validation Data



Immunohistochemical analysis of paraffin-embedded human liver cancer tissue slide using 23792-1-AP (ANGPTL8/Betatrophin antibody) at dilution of 1:200 (under 10x lens).



Immunohistochemical analysis of paraffin-embedded human liver cancer tissue slide using 23792-1-AP (ANGPTL8/Betatrophin antibody) at dilution of 1:200 (under 40x lens).