

For Research Use Only

PRELP Polyclonal antibody

Catalog Number: 23783-1-AP

Featured Product

2 Publications



Basic Information

Catalog Number:

23783-1-AP

Size:

500 ug/ml

Source:

Rabbit

Isotype:

IgG

Immunogen Catalog Number:

AG20656

GenBank Accession Number:

BC032498

GeneID (NCBI):

5549

UNIPROT ID:

P51888

Full Name:

proline/arginine-rich end leucine-rich repeat protein

Calculated MW:

44 kDa

Observed MW:

44 kDa

Purification Method:

Antigen affinity purification

Recommended Dilutions:

WB 1:500-1:2000

IHC 1:50-1:500

IF/ICC 1:50-1:500

Applications

Tested Applications:

WB, IHC, IF/ICC, ELISA

Cited Applications:

WB, IHC, IF, ColP

Species Specificity:

human

Cited Species:

human

Note-IHC: suggested antigen retrieval with TE buffer pH 9.0; (*) Alternatively, antigen retrieval may be performed with citrate buffer pH 6.0

Positive Controls:

WB : L02 cells, SMMC-7721 cells

IHC : human stomach cancer tissue,

IF/ICC : U2OS cells,

Background Information

PRELP (proline/arginine-rich end leucine-rich repeat protein), also known as MST161, MSTP161, prolargin, or SLRR2A, belongs to the class II subfamily of the small leucine-rich proteoglycan (SLRP) family. PRELP is a small leucine-rich proteoglycan (SLRP), which binds collagen to basement membranes or cartilage as a matrix protein. PRELP has prognostic value and regulates cell proliferation and migration in hepatocellular carcinoma, may serve as a potential prognostic marker and a treatment target against HCC progression (PMID: 33033521).

Notable Publications

Author	Pubmed ID	Journal	Application
Xiaoxia Pan	39507711	Front Med (Lausanne)	WB,IHC
Xiaoqing Li	39242474	Apoptosis	WB,IF,ColP

Storage

Storage:

Store at -20°C. Stable for one year after shipment.

Storage Buffer:

PBS with 0.02% sodium azide and 50% glycerol pH 7.3.

Aliquoting is unnecessary for -20°C storage

For technical support and original validation data for this product please contact:

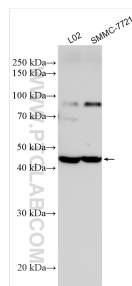
T: 4006900926

E: Proteintech-CN@ptglab.com

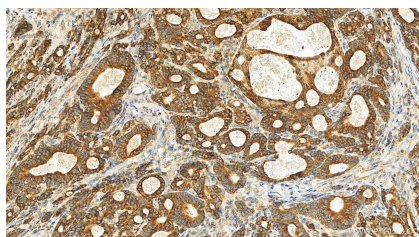
W: ptgcn.com

This product is exclusively available under Proteintech Group brand and is not available to purchase from any other manufacturer.

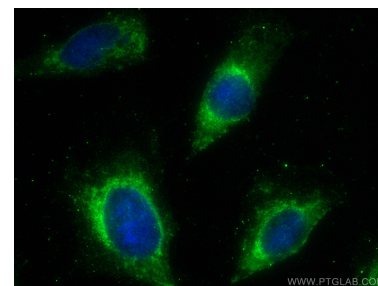
Selected Validation Data



Various lysates were subjected to SDS PAGE followed by western blot with 23783-1-AP (PRELP antibody) at dilution of 1:1000 incubated at room temperature for 1.5 hours.



Immunohistochemical analysis of paraffin-embedded human stomach cancer tissue slide using 23783-1-AP (PRELP antibody) at dilution of 1:200 (under 20x lens). Heat mediated antigen retrieval with Tris-EDTA buffer (pH 9.0).



Immunofluorescent analysis of (-20°C Ethanol) fixed U2OS cells using PRELP antibody (23783-1-AP) at dilution of 1:200 and CoraLite® 488-Conjugated AffiniPure Goat Anti-Rabbit IgG(H+L).