

For Research Use Only

CCDC27 Polyclonal antibody

Catalog Number: 23769-1-AP



Basic Information

Catalog Number: 23769-1-AP	GenBank Accession Number: BC112108	Purification Method: Antigen Affinity purified
Size: 500 µg/ml	GeneID (NCBI): 148870	Recommended Dilutions: WB 1:500-1:1000 IHC 1:50-1:500
Source: Rabbit	UNIPROT ID: Q2M243	
Isotype: IgG	Full Name: coiled-coil domain containing 27	
Immunogen Catalog Number: AG20676	Calculated MW: 656 aa, 75 kDa	
	Observed MW: 75 kDa	

Applications

Tested Applications: IHC, WB, ELISA	Positive Controls: WB : human testis tissue, IHC : human kidney tissue,
Species Specificity: human	

Note-IHC: suggested antigen retrieval with TE buffer pH 9.0; (*) Alternatively, antigen retrieval may be performed with citrate buffer pH 6.0

Background Information

CCDC27 also named as coiled coil domain containing 27 is a 656 amino acids protein, which contains a coiled-coil domain. CCDC27 expression is predominantly in male testis and lowly in other tissues. CCDC27 is a candidate gene for low bone mineral density. The function of CCDC27 is still non-known and need to be further studied.

Storage

Storage:
Store at -20°C. Stable for one year after shipment.
Storage Buffer:
PBS with 0.02% sodium azide and 50% glycerol pH 7.3.
Aliquoting is unnecessary for -20°C storage

For technical support and original validation data for this product please contact:

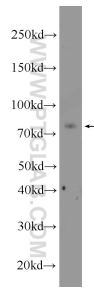
T: 4006900926

E: Proteintech-CN@ptglab.com

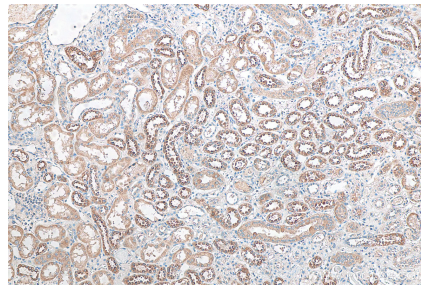
W: ptgcn.com

This product is exclusively available under Proteintech Group brand and is not available to purchase from any other manufacturer.

Selected Validation Data



human testis tissue were subjected to SDS PAGE followed by western blot with 23769-1-AP (CCDC27 antibody) at dilution of 1:600 incubated at room temperature for 1.5 hours.



Immunohistochemical analysis of paraffin-embedded human kidney tissue slide using 23769-1-AP (CCDC27 antibody) at dilution of 1:200 (under 10x lens). Heat mediated antigen retrieval with Tris-EDTA buffer (pH 9.0).