

# TMEM231 Polyclonal antibody

Catalog Number: 23731-1-AP

## Basic Information

Catalog Number: 23731-1-AP	GenBank Accession Number: BC010609	Purification Method: Antigen affinity purification
Size: 200 µg/ml	GeneID (NCBI): 79583	Recommended Dilutions: IHC 1:20-1:200 IF/ICC 1:200-1:800
Source: Rabbit	UNIPROT ID: Q9H6L2	
Isotype: IgG	Full Name: hypothetical protein FLJ22167	
Immunogen Catalog Number: AG20669	Calculated MW: 345 aa, 39 kDa	

## Applications

Tested Applications: IF/ICC, IHC, ELISA	Positive Controls:
Species Specificity: human, canine	IHC : human pancreas tissue, IF/ICC : MDCK cells,

**Note-IHC: suggested antigen retrieval with TE buffer pH 9.0; (\*) Alternatively, antigen retrieval may be performed with citrate buffer pH 6.0**

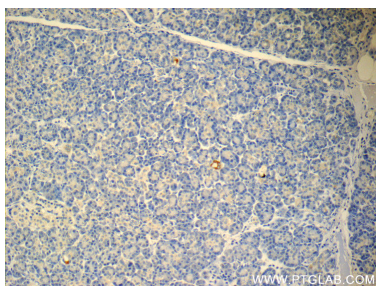
## Background Information

Transmembrane protein 231 (TMEM231) encodes a 36 kDa two-pass transmembrane protein that is part of the B9 complex and localizes to the base of the ciliary axoneme at the TZ. TMEM231 was first identified as a causative gene for MKS and participates in the formation of the diffusion barrier between the cilia and plasma membrane (PMID: 34912761, 37736303). Tmem231 mutant mice have developmental defects reminiscent of MKS patients, including corticomedullary kidney cysts, polydactyly and hepatic ductal plate malformation (PMID: 25869670).

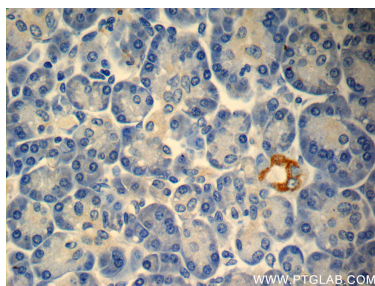
## Storage

**Storage:**  
Store at -20°C. Stable for one year after shipment.  
**Storage Buffer:**  
PBS with 0.02% sodium azide and 50% glycerol pH 7.3.  
Aliquoting is unnecessary for -20°C storage

## Selected Validation Data



Immunohistochemical analysis of paraffin-embedded human pancreas slide using 23731-1-AP (TMEM231 Antibody) at dilution of 1:50. (under 10x lens).



Immunohistochemical analysis of paraffin-embedded human pancreas slide using 23731-1-AP (TMEM231 Antibody) at dilution of 1:50. (under 40x lens).



Immunofluorescent analysis of (4% PFA) fixed MDCK cells using TMEM231 antibody (23731-1-AP) at dilution of 1:400 and CoraLite@488-Conjugated AffiniPure Goat Anti-Rabbit IgG(H+L).