

For Research Use Only

Alpha Actin Polyclonal antibody

Catalog Number: 23660-1-AP

186 Publications



Basic Information

Catalog Number:

23660-1-AP

Source:

Rabbit

Isotype:

IgG

Immunogen Catalog Number:

AG19151

GenBank Accession Number:

BC012597

GeneID (NCBI):

58

UNIPROT ID:

P68133

Full Name:

actin, alpha 1, skeletal muscle

Calculated MW:

42 kDa

Observed MW:

39-42 kDa

Purification Method:

Antigen Affinity purified

Recommended Dilutions:

WB: 1:20000-1:100000

IP: 0.5-4.0 ug for 1.0-3.0 mg of total protein lysate

IHC: 1:200-1:800

IF-P: 1:50-1:500

IF/ICC: 1:200-1:800

FC (Intra): 0.40 ug per 10⁶ cells in a 100 µl suspension

Applications

Tested Applications:

WB, IHC, IF/ICC, IF-P, FC (Intra), IP, ELISA

Cited Applications:

WB, IHC, IF

Species Specificity:

human, mouse, rat

Cited Species:

human, mouse, rat, pig

Note-IHC: suggested antigen retrieval with TE buffer pH 9.0; (*) Alternatively, antigen retrieval may be performed with citrate buffer pH 6.0

Positive Controls:

WB: mouse skeletal muscle tissue, rat skeletal muscle tissue

IP: mouse skeletal muscle tissue,

IHC: mouse skeletal muscle tissue, human colon tissue, human heart tissue, human skeletal muscle tissue

IF-P: mouse heart tissue, mouse skeletal muscle tissue

IF/ICC: AC16 cells, H9C2 cells

FC (Intra): C2C12 cells,

Background Information

Notable Publications

Author	Pubmed ID	Journal	Application
Xin Wen	36249018	Front Oncol	WB
Xu-Hong Fu	30224636	Acta Pharmacol Sin	WB
Ying Lin	32973959	Oncol Lett	WB

Storage

Storage:

Store at -20°C. Stable for one year after shipment.

Storage Buffer:

PBS with 0.02% sodium azide and 50% glycerol, pH7.3

Aliquoting is unnecessary for -20°C storage

For technical support and original validation data for this product please contact:

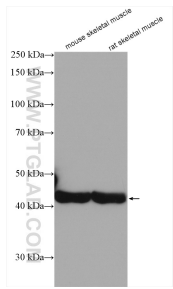
T: 4006900926

E: Proteintech-CN@ptglab.com

W: ptgcn.com

This product is exclusively available under Proteintech Group brand and is not available to purchase from any other manufacturer.

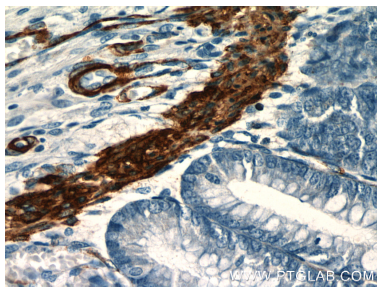
Selected Validation Data



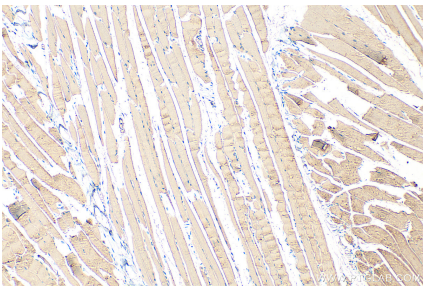
Various lysates were subjected to SDS PAGE followed by western blot with 23660-1-AP (alpha Actin antibody) at dilution of 1:150000 incubated at room temperature for 1.5 hours.



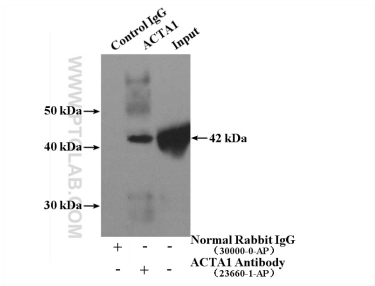
Immunohistochemical analysis of paraffin-embedded human colon slide using 23660-1-AP (alpha Actin antibody at dilution of 1:50.



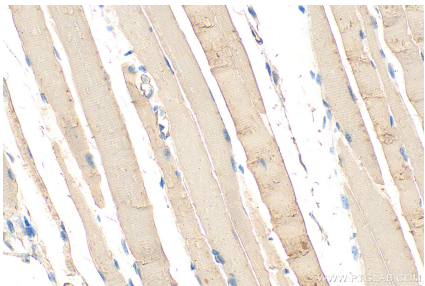
Immunohistochemical analysis of paraffin-embedded human colon slide using 23660-1-AP (alpha Actin antibody at dilution of 1:50.



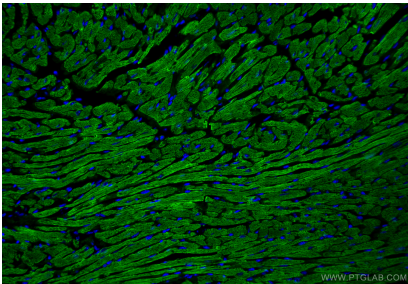
Immunohistochemical analysis of paraffin-embedded mouse skeletal muscle tissue slide using 23660-1-AP (Alpha Actin antibody) at dilution of 1:400 (under 10x lens). Heat mediated antigen retrieval with Tris-EDTA buffer (pH 9.0).



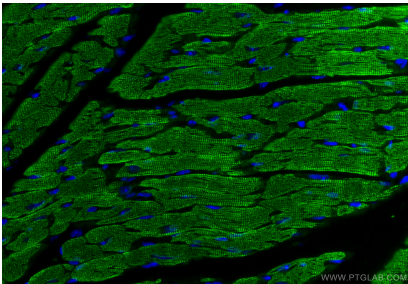
IP result of anti-Alpha Actin (IP:23660-1-AP, 4ug; Detection:23660-1-AP 1:4000) with mouse skeletal muscle tissue lysate 2200ug.



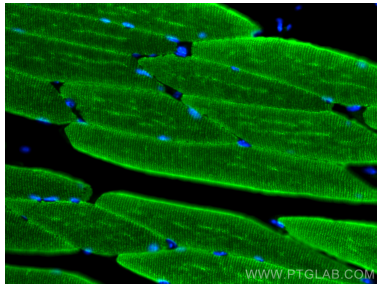
Immunohistochemical analysis of paraffin-embedded mouse skeletal muscle tissue slide using 23660-1-AP (Alpha Actin antibody) at dilution of 1:400 (under 40x lens). Heat mediated antigen retrieval with Tris-EDTA buffer (pH 9.0).



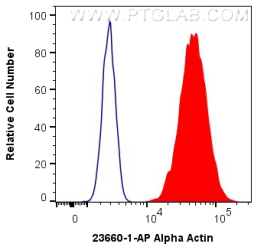
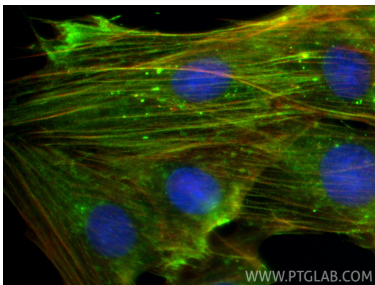
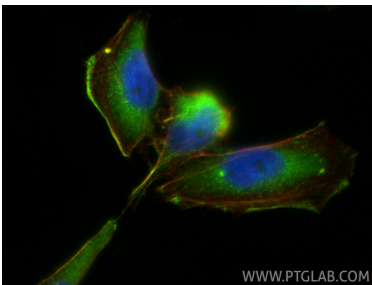
Immunofluorescent analysis of (4% PFA) fixed paraffin-embedded mouse heart tissue using Alpha Actin antibody (23660-1-AP) at dilution of 1:200 and CoraLite®488-Conjugated Goat Anti-Rabbit IgG(H+L) (SA00013-2). Heat mediated antigen retrieval with Tris-EDTA buffer (pH 9.0).



Immunofluorescent analysis of (4% PFA) fixed paraffin-embedded mouse heart tissue using Alpha Actin antibody (23660-1-AP) at dilution of 1:200 and CoraLite®488-Conjugated Goat Anti-Rabbit IgG(H+L) (SA00013-2). Heat mediated antigen retrieval with Tris-EDTA buffer (pH 9.0).



Immunofluorescent analysis of (4% PFA) fixed paraffin-embedded mouse skeletal muscle tissue using Alpha Actin antibody (23660-1-AP) at dilution of 1:200 and CoraLite®488-Conjugated Goat Anti-Rabbit IgG(H+L) (SA00013-2). Heat mediated antigen retrieval with Tris-EDTA buffer (pH 9.0).



Immunofluorescent analysis of (-20°C Ethanol) fixed AC16 cells using Alpha Actin antibody (23660-1-AP) at dilution of 1:400 and CoraLite®488-Conjugated Goat Anti-Rabbit IgG(H+L) (SA00013-2), CL594-phalloidin (red).

Immunofluorescent analysis of (-20°C Ethanol) fixed H9C2 cells using Alpha Actin antibody (23660-1-AP) at dilution of 1:400 and CoraLite®488-Conjugated Goat Anti-Rabbit IgG(H+L) (SA00013-2), CL594-phalloidin (red).

1X10⁶ C2C12 cells were intracellularly stained with 0.4 ug Anti-Human Alpha Actin (23660-1-AP) and CoraLite®488-Conjugated AffiniPure Goat Anti-Rabbit IgG(H+L) at dilution 1:1000 (red), or 0.4 ug Isotype Control. Cells were fixed with 4% PFA and permeabilized with Flow Cytometry Perm Buffer.