

For Research Use Only

SFMBT1 Polyclonal antibody

Catalog Number: 23631-1-AP



Basic Information

Catalog Number: 23631-1-AP	GenBank Accession Number: BC014614	Purification Method: Antigen Affinity purified
Concentration: 450 µg/ml	GeneID (NCBI): 51460	Recommended Dilutions: WB: 1:1000-1:6000
Source: Rabbit	UNIPROT ID: Q9UHI3	
Isotype: IgG	Full Name: Scm-like with four mbt domains 1	
Immunogen Catalog Number: AG20417	Calculated MW: 866 aa, 98 kDa	
	Observed MW: 93-98 kDa	

Applications

Tested Applications: WB, ELISA	Positive Controls: WB : IMR-32 cells, mouse testis tissue, rat testis tissue
Species Specificity: human, mouse, rat	

Background Information

Scm-like with four MBT domains protein 1 (SFMBT1) is also named as Renal ubiquitous protein 1 (RU1). SFMBT1 is a transcriptional repressor that associates with chromatin and interacts with the N-terminal tail of histone H3 (PMID: 17599839). SFMBT1 forms a complex with Lys-specific demethylase 1 (LSD1) and they are believed to act together in combination with RNA polymerase II in the transcriptional regulation of histone genes (PMID: 23592795). SFMBT1 is up-regulated in CRC tumor tissues and cells and may be associated with drug resistance (PMID: 35577773). SFMBT1 regulates the expression and interacts with key genes involved in heart muscle and artery development (PWWP2A, as well as myogenic differentiation (MYOD, SIX2) (PMID: 35483874). Testes, endocrine glands, and blood are tissues that highly express SFMBT1 (PMID: 25613900). SFMBT1 is also highly expressed in skeletal muscles specifically in undifferentiated myoblasts, and this expression starts diminishing during muscle differentiation (PMID: 23349461).

Storage

Storage:
Store at -20°C. Stable for one year after shipment.
Storage Buffer:
PBS with 0.02% sodium azide and 50% glycerol, pH7.3
Aliquoting is unnecessary for -20°C storage

For technical support and original validation data for this product please contact:

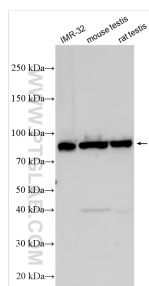
T: 4006900926

E: Proteintech-CN@ptglab.com

W: ptgcn.com

This product is exclusively available under Proteintech Group brand and is not available to purchase from any other manufacturer.

Selected Validation Data



Various lysates were subjected to SDS PAGE followed by western blot with 23631-1-AP (SFMBT1 antibody) at dilution of 1:3000 incubated at room temperature for 1.5 hours.