

# RPS25 Polyclonal antibody

Catalog Number: 23599-1-AP

2 Publications

## Basic Information

## Catalog Number:

23599-1-AP

## Size:

600 µg/ml

## Source:

Rabbit

## Isotype:

IgG

## Immunogen Catalog Number:

AG7890

## GenBank Accession Number:

BC004986

## GeneID (NCBI):

6230

## UNIPROT ID:

P62851

## Full Name:

ribosomal protein S25

## Calculated MW:

14 kDa

## Observed MW:

15-17 kDa

## Purification Method:

Antigen affinity purification

## Recommended Dilutions:

WB 1:2000-1:10000

IHC 1:50-1:500

IF/ICC 1:20-1:200

## Applications

## Tested Applications:

IF/ICC, IHC, WB, ELISA

## Cited Applications:

WB

## Species Specificity:

human

## Cited Species:

human

**Note-IHC: suggested antigen retrieval with TE buffer pH 9.0; (\*) Alternatively, antigen retrieval may be performed with citrate buffer pH 6.0**

## Positive Controls:

WB : A549 cells, HeLa cells, K-562 cells, MCF-7 cells

IHC : human breast cancer tissue, human liver tissue

IF/ICC : MCF-7 cells,

## Background Information

Ribosomal protein S25 (RPS25) is a novel MDM2 interacting protein. It may be involved in viral replication of Dicistroviridae and hepatitis C viruses. RPS25 is overexpressed in human leukemia cells exhibiting adriamycin resistance. It may have a role in p53-mediated apoptosis and cell-cycle arrest. The expected MW of RPS25 is about 15-17kDa. Catalog# 23599-1-AP is a rabbit polyclonal antibody raised against full-length RPS25, and is recommended for ELISA, Western blotting.

## Notable Publications

Author	Pubmed ID	Journal	Application
Chiung-Hung Hsu	27161446	Mol Cell Proteomics	WB
Yuhe Jiang	38047915	ACS Nano	WB

## Storage

## Storage:

Store at -20°C. Stable for one year after shipment.

## Storage Buffer:

PBS with 0.02% sodium azide and 50% glycerol pH 7.3.

Aliquoting is unnecessary for -20°C storage

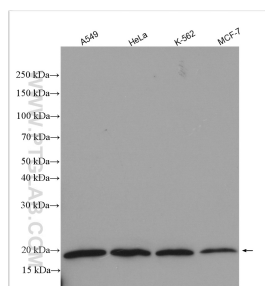
For technical support and original validation data for this product please contact:

T: 4006900926

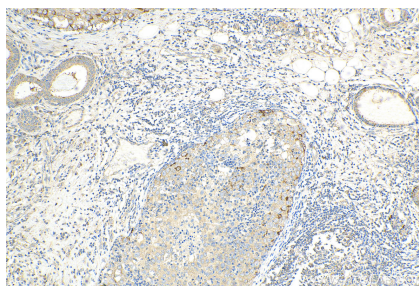
E: [Proteintech-CN@ptglab.com](mailto:Proteintech-CN@ptglab.com)W: [ptgcn.com](http://ptgcn.com)

This product is exclusively available under Proteintech Group brand and is not available to purchase from any other manufacturer.

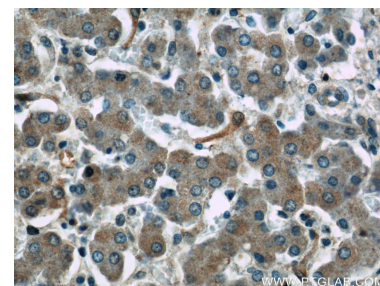
## Selected Validation Data



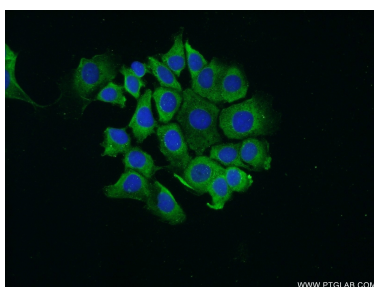
Various lysates were subjected to SDS PAGE followed by western blot with 23599-1-AP (RPS25 antibody) at dilution of 1:5000 incubated at room temperature for 1.5 hours.



Immunohistochemical analysis of paraffin-embedded human breast cancer tissue slide using 23599-1-AP (RPS25 antibody) at dilution of 1:200 (under 10x lens). Heat mediated antigen retrieval with Tris-EDTA buffer (pH 9.0).



Immunohistochemical analysis of paraffin-embedded human liver slide using 23599-1-AP (RPS25 Antibody) at dilution of 1:50.



Immunofluorescent analysis of MCF-7 cells using 23599-1-AP (RPS25 antibody) at dilution of 1:50 and Alexa Fluor 488-conjugated AffiniPure Goat Anti-Rabbit IgG(H+L).