

For Research Use Only

Smoothelin Polyclonal antibody

Catalog Number: 23567-1-AP

6 Publications



Basic Information

Catalog Number:

23567-1-AP

Source:

Rabbit

Isotype:

IgG

Immunogen Catalog Number:

AG19983

GenBank Accession Number:

BC034237

GeneID (NCBI):

6525

UNIPROT ID:

P53814

Full Name:

smoothelin

Calculated MW:

940 aa, 102 kDa

Observed MW:

117 kDa

Purification Method:

Antigen Affinity purified

Recommended Dilutions:

WB: 1:500-1:1000

IHC: 1:50-1:500

Applications

Tested Applications:

WB, IHC, ELISA

Cited Applications:

WB, IHC

Species Specificity:

human, mouse, rat

Cited Species:

human, mouse

Note-IHC: suggested antigen retrieval with TE buffer pH 9.0; (*) Alternatively, antigen retrieval may be performed with citrate buffer pH 6.0

Positive Controls:

WB : COLO 320 cells,

IHC : human hysteresomyoma tissue,

Background Information

SMTN, also named as Smoothelin, is a 917 amino acid protein, which contains 1 CH (calponin-homology) domain and belongs to the smoothelin family. SMTN as structural protein of the cytoskeleton involve in muscle organ development and smooth muscle contraction.

Notable Publications

Author	Pubmed ID	Journal	Application
Nao Iguchi	31066574	Am J Physiol Renal Physiol	WB
Jinxing Peng	40527360	Cell Signal	WB
Rohtem Aviram	39632420	FEBS J	WB,IHC

Storage

Storage:

Store at -20°C. Stable for one year after shipment.

Storage Buffer:

PBS with 0.02% sodium azide and 50% glycerol, pH7.3

Aliquoting is unnecessary for -20°C storage

For technical support and original validation data for this product please contact:

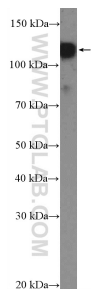
T: 4006900926

E: Proteintech-CN@ptglab.com

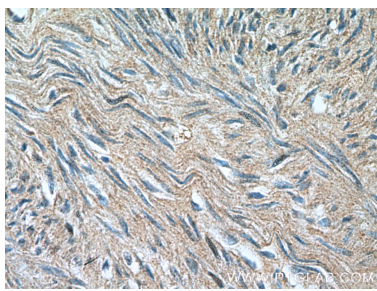
W: ptgcn.com

This product is exclusively available under Proteintech Group brand and is not available to purchase from any other manufacturer.

Selected Validation Data



COLO 320 cells were subjected to SDS PAGE followed by western blot with 23567-1-AP (Smoothelin Antibody) at dilution of 1:600 incubated at room temperature for 1.5 hours.



Immunohistochemical analysis of paraffin-embedded human hystero myoma tissue slide using 23567-1-AP (Smoothelin Antibody) at dilution of 1:200 (under 40x lens).