

For Research Use Only

Laminin beta 1 Polyclonal antibody

Catalog Number: 23498-1-AP

30 Publications



Basic Information

Catalog Number:

23498-1-AP

Concentration:

950 ug/ml

Source:

Rabbit

Isotype:

IgG

Immunogen Catalog Number:

AG19182

GenBank Accession Number:

BC113455

GeneID (NCBI):

3912

UNIPROT ID:

P07942

Full Name:

laminin, beta 1

Calculated MW:

1786 aa, 198 kDa

Observed MW:

220 kDa

Purification Method:

Antigen affinity purification

Recommended Dilutions:

WB 1:500-1:2000

IP 0.5-4.0 ug for 1.0-3.0 mg of total protein lysate

IF/ICC 1:200-1:800

Applications

Tested Applications:

WB, IF/ICC, IP, ELISA

Cited Applications:

WB, IHC, IF

Species Specificity:

human, mouse, rat

Cited Species:

human, mouse, rat

Positive Controls:

WB : NIH/3T3 cells, Jurkat cells

IP : NIH/3T3 cells,

IF/ICC : HepG2 cells,

Background Information

Laminins are a family of basement membrane glycoproteins composed of three nonidentical chains, laminin alpha, beta and gamma (formerly A, B1, and B2, respectively) (PMID: 7959779). Laminins contribute to the structure of extracellular matrix and influence the behavior of associated cells, such as adhesion, differentiation, migration, phenotype stability, and resistance to anoikis (PMID: 23057746). Laminin beta 1 (LAMB1) is expressed in most tissues that produce basement membranes, and is one of the 3 chains constituting laminin-1, the first laminin isolated from Engelbreth-Holm-Swarm (EHS) tumor. Laminin beta 1 is also a subunit of laminin-2 (laminin-211 or merosin), laminin-6 (laminin-311 or K-laminin), laminin-8 (laminin-411), laminin-10 (laminin-511) and laminin-12 (laminin-213).

Notable Publications

Author	Pubmed ID	Journal	Application
Fei Yao	36163271	Inflamm Regen	WB,IF
Shuxiang Yu	34956479	Am J Transl Res	IF
Yi Li	35618676	ACS Appl Mater Interfaces	IF

Storage

Storage:

Store at -20°C. Stable for one year after shipment.

Storage Buffer:

PBS with 0.02% sodium azide and 50% glycerol pH 7.3.

Aliquoting is unnecessary for -20°C storage

For technical support and original validation data for this product please contact:

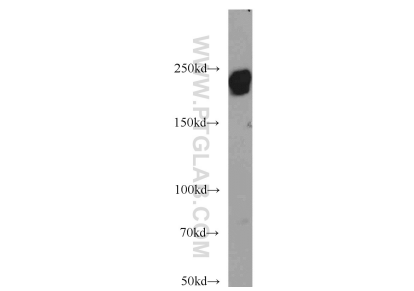
T: 4006900926

E: Proteintech-CN@ptglab.com

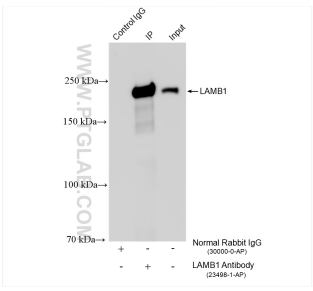
W: ptgcn.com

This product is exclusively available under Proteintech Group brand and is not available to purchase from any other manufacturer.

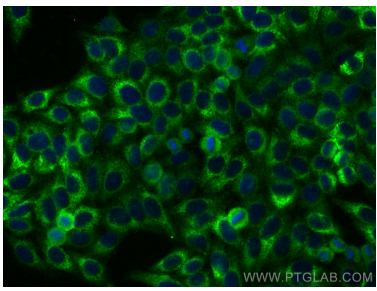
Selected Validation Data



NIH/3T3 cells were subjected to SDS PAGE followed by western blot with 23498-1-AP (LAMB1 antibody) at dilution of 1:1000 incubated at room temperature for 1.5 hours.



IP result of anti-Laminin beta 1 (IP:23498-1-AP, 4ug; Detection:23498-1-AP 1:2000) with NIH/3T3 cells lysate 1920 ug.



Immunofluorescent analysis of (-20°C Ethanol) fixed HepG2 cells using Laminin beta 1 antibody (23498-1-AP) at dilution of 1:400 and Multi-rAb CoraLite® Plus 488-Goat Anti-Rabbit Recombinant Secondary Antibody (H+L) (RGAR002).