

For Research Use Only

# AMH Polyclonal antibody

Catalog Number: 23479-1-AP

1 Publications



## Basic Information

Catalog Number:

23479-1-AP

Size:

400 µg/ml

Source:

Rabbit

Isotype:

IgG

Immunogen Catalog Number:

AG20166

GenBank Accession Number:

BC049194

GeneID (NCBI):

268

UNIPROT ID:

P03971

Full Name:

anti-Mullerian hormone

Calculated MW:

59 kDa

Purification Method:

Antigen Affinity purified

Recommended Dilutions:

IHC 1:20-1:200

IF-P 1:50-1:500

IF/ICC 1:50-1:500

## Applications

Tested Applications:

IHC, IF/ICC, IF-P, ELISA

Cited Applications:

IF

Species Specificity:

human, rat

Cited Species:

human

**Note-IHC: suggested antigen retrieval with TE buffer pH 9.0; (\*) Alternatively, antigen retrieval may be performed with citrate buffer pH 6.0**

Positive Controls:

IHC : human ovary tissue, rat ovary tissue

IF-P : mouse ovary tissue,

IF/ICC : HeLa cells,

## Background Information

Anti-Müllerian hormone (AMH), also called Müllerian-inhibiting substance (MIS), is a dimeric glycoprotein and a member of the TGF- $\beta$  family. AMH, produced by the Sertoli cells of the fetal testis, induces the regression of the Müllerian ducts, the anlagen of the female reproductive tract. However, after birth, this sex-dimorphic expression pattern is lost and AMH is also expressed in granulosa cells of growing follicles in the ovary. More recently, AMH has been studied for its role in ovarian folliculogenesis and as a potential marker of ovarian reserve.

## Notable Publications

Author	Pubmed ID	Journal	Application
Xinyang Zhao	36926803	ACS Appl Mater Interfaces	IF

## Storage

Storage:

Store at -20°C. Stable for one year after shipment.

Storage Buffer:

PBS with 0.02% sodium azide and 50% glycerol pH 7.3.

Aliquoting is unnecessary for -20°C storage

For technical support and original validation data for this product please contact:

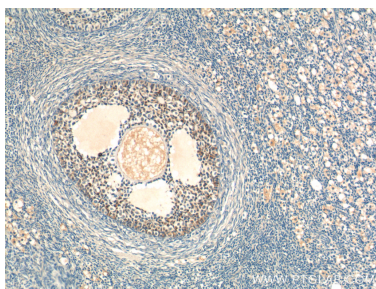
T: 4006900926

E: [Proteintech-CN@ptglab.com](mailto:Proteintech-CN@ptglab.com)

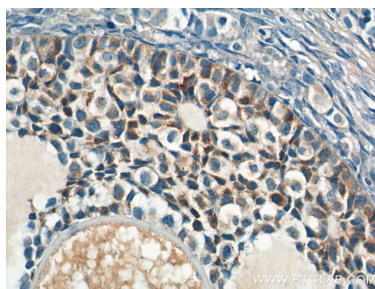
W: [ptgcn.com](http://ptgcn.com)

This product is exclusively available under Proteintech Group brand and is not available to purchase from any other manufacturer.

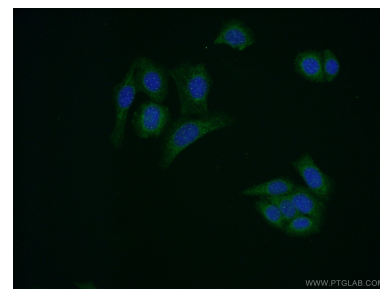
## Selected Validation Data



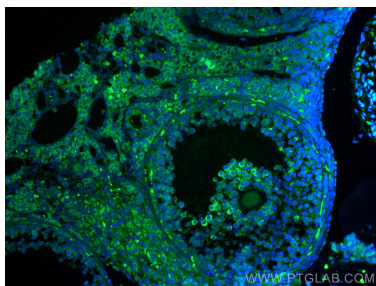
Immunohistochemical analysis of paraffin-embedded human ovary tissue slide using 23479-1-AP (AMH Antibody) at dilution of 1:200 (under 10x lens).



Immunohistochemical analysis of paraffin-embedded human ovary tissue slide using 23479-1-AP (AMH Antibody) at dilution of 1:200 (under 40x lens).



Immunofluorescent analysis of HeLa cells using 23479-1-AP (AMH antibody) at dilution of 1:50 and Alexa Fluor 488-conjugated AffiniPure Goat Anti-Rabbit IgG(H+L).



Immunofluorescent analysis of (4% PFA) fixed mouse ovary tissue using AMH antibody (23479-1-AP) at dilution of 1:200 and CoraLite®488-Conjugated AffiniPure Goat Anti-Rabbit IgG(H+L).