

For Research Use Only

KHDC1 Polyclonal antibody

Catalog Number: 23443-1-AP



Basic Information

Catalog Number:

23443-1-AP

Size:

500 ug/ml

Source:

Rabbit

Isotype:

IgG

Immunogen Catalog Number:

AG20115

GenBank Accession Number:

BC022080

GeneID (NCBI):

80759

UNIPROT ID:

Q4VXA5

Full Name:

KH homology domain containing 1

Calculated MW:

237 aa, 27 kDa

Observed MW:

35-40 kDa

Purification Method:

Antigen Affinity purified

Recommended Dilutions:

WB 1:500-1:1000

IHC 1:50-1:500

Applications

Tested Applications:

WB, IHC, ELISA

Species Specificity:

human

Note-IHC: suggested antigen retrieval with TE buffer pH 9.0; (*) Alternatively, antigen retrieval may be performed with citrate buffer pH 6.0

Positive Controls:

WB : LO2 cells,

IHC : human stomach cancer tissue, human liver tissue, human stomach tissue

Background Information

KHDC1, also named as C6orf148, belongs to the KHDC1 family. KHDC1 has two isoforms with calculated MW 27 kDa and 18 kDa. It's a membrane protein. We got 35-40 kDa in our WB detection.

Storage

Storage:

Store at -20°C. Stable for one year after shipment.

Storage Buffer:

PBS with 0.02% sodium azide and 50% glycerol pH 7.3.

Aliquoting is unnecessary for -20°C storage

For technical support and original validation data for this product please contact:

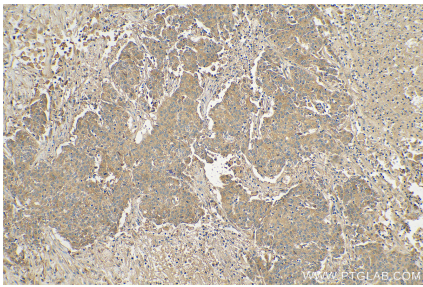
T: 4006900926

E: Proteintech-CN@ptglab.com

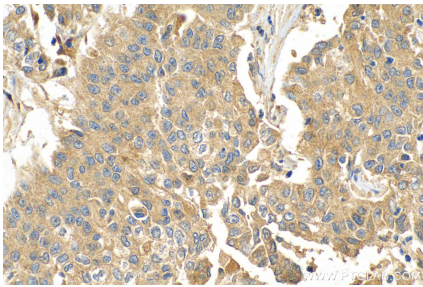
W: ptgcn.com

This product is exclusively available under Proteintech Group brand and is not available to purchase from any other manufacturer.

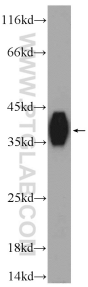
Selected Validation Data



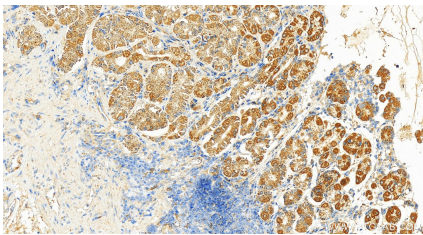
Immunohistochemical analysis of paraffin-embedded human stomach cancer tissue slide using 23443-1-AP (KHDC1 antibody) at dilution of 1:100 (under 10x lens). Heat mediated antigen retrieval with Tris-EDTA buffer (pH 9.0).



Immunohistochemical analysis of paraffin-embedded human stomach cancer tissue slide using 23443-1-AP (KHDC1 antibody) at dilution of 1:100 (under 40x lens). Heat mediated antigen retrieval with Tris-EDTA buffer (pH 9.0).



L02 cells were subjected to SDS PAGE followed by western blot with 23443-1-AP (KHDC1 Antibody) at dilution of 1:600 incubated at room temperature for 1.5 hours.



Immunohistochemical analysis of paraffin-embedded human normal stomach slide using 23443-1-AP (KHDC1 antibody) at dilution of 1:200 (under 20x lens). Heat mediated antigen retrieval with Tris-EDTA buffer (pH 9.0).