

For Research Use Only

CBX6 Polyclonal antibody

Catalog Number: 23426-1-AP **1 Publications**



Basic Information

Catalog Number: 23426-1-AP	GenBank Accession Number: BC064900	Purification Method: Antigen affinity purification
Size: 650 µg/ml	GeneID (NCBI): 23466	Recommended Dilutions: WB 1:500-1:2000 IHC 1:20-1:200
Source: Rabbit	UNIPROT ID: O95503	
Isotype: IgG	Full Name: chromobox homolog 6	
Immunogen Catalog Number: AG20014	Calculated MW: 412 aa, 44 kDa	
	Observed MW: 55-60 kDa	

Applications

Tested Applications: IHC, WB, ELISA	Positive Controls: WB : HepG2 cells, HEK-293 cells, HeLa cells IHC : human skin tissue,
Cited Applications: WB	
Species Specificity: human	
Cited Species: human	
Note-IHC: suggested antigen retrieval with TE buffer pH 9.0; (*) Alternatively, antigen retrieval may be performed with citrate buffer pH 6.0	

Background Information

The Chromobox domain (Cbx) gene family, consisting of Polycomb and Heterochromatin Protein 1 genes, involves in transcriptional repression, cell cycle regulation and chromatin remodeling [PMID: 17486619]. Cbx6, other named neuronal pentraxin receptor (NPR), first described as a putative integral membrane pentraxin that interacts with neuronal pentraxin 1 and 2, has also been classified as a Pc protein [PMID: 14647293]. NPR was determined to be a member of a distinct pentraxin protein subfamily, and found to form heteropentamer with NP1 and NP2, followed by release from cell membranes [PMID: 10748068].

Notable Publications

Author	Pubmed ID	Journal	Application
Xun Huang	30220457	Cell	WB

Storage

Storage:
Store at -20°C. Stable for one year after shipment.
Storage Buffer:
PBS with 0.02% sodium azide and 50% glycerol pH 7.3.
Aliquoting is unnecessary for -20°C storage

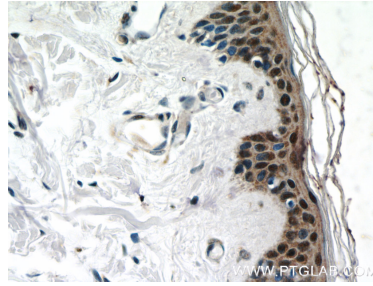
For technical support and original validation data for this product please contact:
T: 4006900926 E: Proteintech-CN@ptglab.com W: ptgcn.com

This product is exclusively available under Proteintech Group brand and is not available to purchase from any other manufacturer.

Selected Validation Data



HepG2 cells were subjected to SDS PAGE followed by western blot with 23426-1-AP (CBX6 antibody) at dilution of 1:1000 incubated at room temperature for 1.5 hours.



Immunohistochemical analysis of paraffin-embedded human skin slide using 23426-1-AP (CBX6 Antibody) at dilution of 1:50.