

For Research Use Only

ADH7 Polyclonal antibody

Catalog Number: 23425-1-AP

1 Publications



Basic Information

Catalog Number: 23425-1-AP	GenBank Accession Number: BC131512	Purification Method: Antigen affinity purification
Concentration: 900 ug/ml	GeneID (NCBI): 131	Recommended Dilutions: WB 1:500-1:2000
Source: Rabbit	UNIPROT ID: P40394	IHC 1:20-1:200
Isotype: IgG	Full Name: alcohol dehydrogenase 7 (class IV), mu or sigma polypeptide	IF/ICC 1:200-1:800
Immunogen Catalog Number: AG19340	Calculated MW: 386 aa, 41 kDa	
	Observed MW: 45-47 kDa	

Applications

Tested Applications: WB, IHC, IF/ICC, ELISA	Positive Controls: WB : HeLa cells, A549 cells, HEK-293 cells
Cited Applications: WB	IHC : human liver tissue,
Species Specificity: human	IF/ICC : HepG2 cells,
Cited Species: mouse	
Note-IHC: suggested antigen retrieval with TE buffer pH 9.0; (*) Alternatively, antigen retrieval may be performed with citrate buffer pH 6.0	

Background Information

ADH7(Alcohol dehydrogenase class 4 mu/sigma chain) is also named as gastric alcohol dehydrogenase, retinol dehydrogenase and belongs to the zinc-containing alcohol dehydrogenase family. The ubiquitous expression pattern of ADH7 during embryogenesis has led to the notion that the enzymatic conversion of retinol to retinal occurs more or less uniformly and plays no role in the spatial or temporal regulation of RA synthesis during embryonic development(PMID:17473173). It has 2 isoforms produced by alternative splicing and can exist as a homodimer(PMID:18479436).

Notable Publications

Author	Pubmed ID	Journal	Application
Guanqi Dai	37335109	Aging (Albany NY)	WB

Storage

Storage:
Store at -20°C. Stable for one year after shipment.
Storage Buffer:
PBS with 0.02% sodium azide and 50% glycerol pH 7.3.
Aliquoting is unnecessary for -20°C storage

For technical support and original validation data for this product please contact:

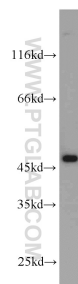
T: 4006900926

E: Proteintech-CN@ptglab.com

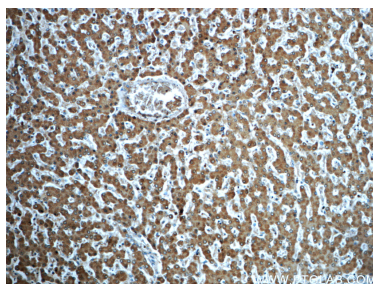
W: ptgcn.com

This product is exclusively available under Proteintech Group brand and is not available to purchase from any other manufacturer.

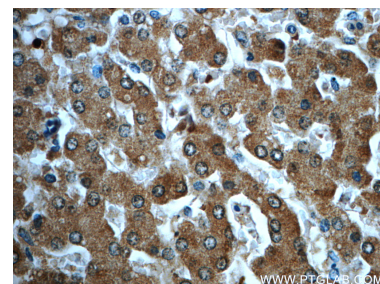
Selected Validation Data



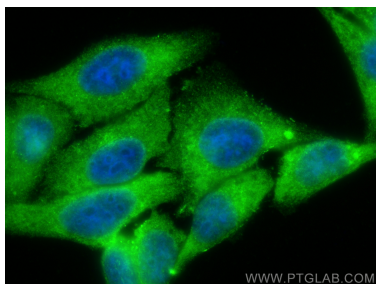
HeLa cells were subjected to SDS PAGE followed by western blot with 23425-1-AP (ADH7 antibody) at dilution of 1:1000 incubated at room temperature for 1.5 hours.



Immunohistochemical analysis of paraffin-embedded human liver slide using 23425-1-AP (ADH7 Antibody) at dilution of 1:50.



Immunohistochemical analysis of paraffin-embedded human liver slide using 23425-1-AP (ADH7 Antibody) at dilution of 1:50.



Immunofluorescent analysis of (-20°C Ethanol) fixed HepG2 cells using ADH7 antibody (23425-1-AP) at dilution of 1:400 and CoraLite®488-Conjugated Goat Anti-Rabbit IgG(H+L) (SA00013-2).