

For Research Use Only

WDR62 Polyclonal antibody, PBS Only

Catalog Number: 23404-1-PBS



Basic Information

Catalog Number: 23404-1-PBS	GenBank Accession Number: BC017261	Purification Method: Antigen Affinity purified
Concentration: 1 mg/ml	GeneID (NCBI): 284403	
Source: Rabbit	UNIPROT ID: O43379	
Isotype: IgG	Full Name: WD repeat domain 62	
Immunogen Catalog Number: AG19865	Calculated MW: 1518 aa, 166 kDa	
	Observed MW: 180 kDa	

Applications

Tested Applications:
IHC, IF/ICC, IP, Indirect ELISA

Species Specificity:
human, mouse

Background Information

The WD40-repeat protein 62 (WDR62) is a scaffold protein that recruits different components of the JNK signaling pathway to regulate several human diseases including neurological disorders, infertility, and tumorigenesis (PMID: 33937237). Moreover, WDR62 participates in diverse biological processes, especially mitotic spindle organization via regulating centriole biogenesis and the function of centriole-associated protein (PMID: 35093571).

Storage

Storage:
Store at -80°C.
The product is shipped with ice packs. Upon receipt, store it immediately at -80°C

Storage Buffer:
PBS only, pH7.3

For technical support and original validation data for this product please contact:

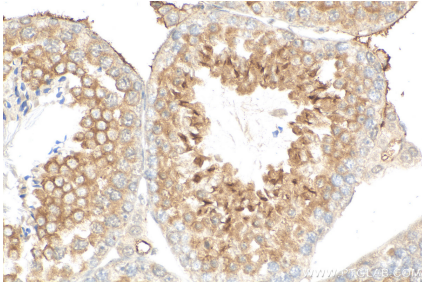
T: 4006900926

E: Proteintech-CN@ptglab.com

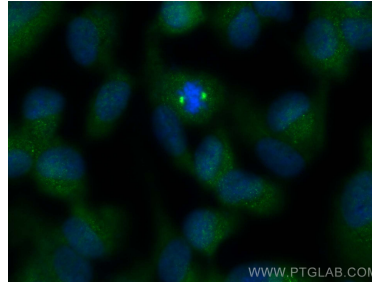
W: ptgcn.com

This product is exclusively available under Proteintech Group brand and is not available to purchase from any other manufacturer.

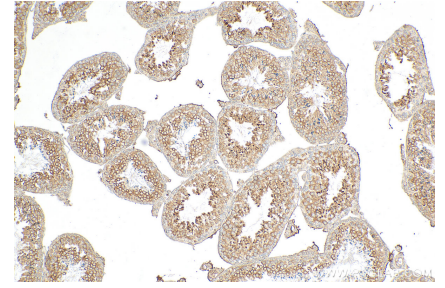
Selected Validation Data



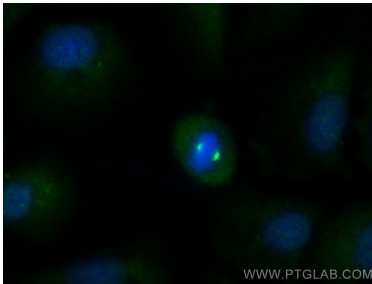
Immunohistochemical analysis of paraffin-embedded mouse testis tissue slide using 23404-1-AP (WDR62 antibody) at dilution of 1:200 (under 40x lens). Heat mediated antigen retrieval with Tris-EDTA buffer (pH 9.0). This data was developed using the same antibody clone with 23404-1-PBS in a different storage buffer formulation.



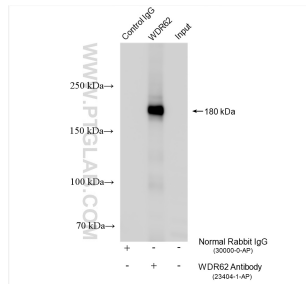
Immunofluorescent analysis of (-20°C Methanol) fixed hTERT-RPE1 cells using WDR62 antibody (23404-1-AP) at dilution of 1:400 and CoraLite®488-Conjugated AffiniPure Goat Anti-Rabbit IgG(H+L). This data was developed using the same antibody clone with 23404-1-PBS in a different storage buffer formulation.



Immunohistochemical analysis of paraffin-embedded mouse testis tissue slide using 23404-1-AP (WDR62 antibody) at dilution of 1:200 (under 10x lens). Heat mediated antigen retrieval with Tris-EDTA buffer (pH 9.0). This data was developed using the same antibody clone with 23404-1-PBS in a different storage buffer formulation.



Immunofluorescent analysis of (-20°C Methanol) fixed A549 cells using WDR62 antibody (23404-1-AP) at dilution of 1:400 and CoraLite®488-Conjugated AffiniPure Goat Anti-Rabbit IgG(H+L). This data was developed using the same antibody clone with 23404-1-PBS in a different storage buffer formulation.



IP result of anti-WDR62 (IP:23404-1-AP, 4ug; Detection:23404-1-AP 1:500) with HEK-293T cells lysate 1320 ug. This data was developed using the same antibody clone with 23404-1-PBS in a different storage buffer formulation.