

For Research Use Only

# KLF2 Polyclonal antibody, PBS Only

Catalog Number: 23384-1-PBS

Featured Product



## Basic Information

**Catalog Number:**

23384-1-PBS

**Source:**

Rabbit

**Isotype:**

IgG

**Immunogen Catalog Number:**

AG20019

**GenBank Accession Number:**

BC071983

**GeneID (NCBI):**

10365

**UNIPROT ID:**

Q9Y5W3

**Full Name:**

Kruppel-like factor 2 (lung)

**Calculated MW:**

355 aa, 37 kDa

**Observed MW:**

37-40 kDa, 60 kDa

**Purification Method:**

Antigen Affinity purified

## Applications

**Tested Applications:**

WB, Indirect ELISA

**Species Specificity:**

human, mouse

## Background Information

KLF2 (Kruppel-like Factor 2) belongs to zinc finger transcription factors, and it is implicated in a variety of biochemical processes, including lung development, embryonic erythropoiesis, epithelial integrity, T-cell viability, and adipogenesis (PMID: 17904406). KLF2 was identified as a negative regulator of T cell activation and adipogenesis. KLF2 also acts as a novel regulator of endothelial proinflammatory activation, inhibiting the inflammatory cytokine-mediated induction of adhesion molecule expression and immune cell adhesion (PMID:15718498). KLF2-null mice exhibit abnormal blood vessel formation, resulting in embryonic haemorrhage and death (PMID: 32132543). KLF2 can be detected 60 kDa by post-translationally modified (PMID: 36466816).

## Storage

**Storage:**

Store at -80°C.

**The product is shipped with ice packs. Upon receipt, store it immediately at -80°C**

**Storage Buffer:**

PBS only, pH7.3

For technical support and original validation data for this product please contact:

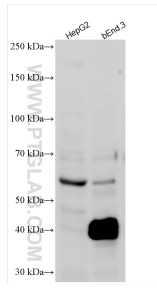
T: 4006900926

E: [Proteintech-CN@ptglab.com](mailto:Proteintech-CN@ptglab.com)

W: [ptgcn.com](http://ptgcn.com)

**This product is exclusively available under Proteintech Group brand and is not available to purchase from any other manufacturer.**

## Selected Validation Data



Various lysates were subjected to SDS PAGE followed by western blot with 23384-1-AP (KLF2 antibody) at dilution of 1:800 incubated at room temperature for 1.5 hours. This data was developed using the same antibody clone with 23384-1-PBS in a different storage buffer formulation.