

For Research Use Only

KLF2 Polyclonal antibody

Catalog Number: 23384-1-AP

Featured Product

1 Publications



Basic Information

Catalog Number:

23384-1-AP

Size:

1000 µg/ml

Source:

Rabbit

Isotype:

IgG

Immunogen Catalog Number:

AG20019

GenBank Accession Number:

BC071983

GeneID (NCBI):

10365

UNIPROT ID:

Q9Y5W3

Full Name:

Kruppel-like factor 2 (lung)

Calculated MW:

355 aa, 37 kDa

Observed MW:

37-40 kDa, 60 kDa

Purification Method:

Antigen Affinity purified

Recommended Dilutions:

WB 1:500-1:1000

Applications

Tested Applications:

WB, ELISA

Cited Applications:

WB, IP

Species Specificity:

human, mouse

Cited Species:

human

Positive Controls:

WB : HepG2 cells, bEnd.3 cells

Background Information

KLF2 (Kruppel-like Factor 2) belongs to zinc finger transcription factors, and it is implicated in a variety of biochemical processes, including lung development, embryonic erythropoiesis, epithelial integrity, T-cell viability, and adipogenesis (PMID: 17904406). KLF2 was identified as a negative regulator of T cell activation and adipogenesis. KLF2 also acts as a novel regulator of endothelial proinflammatory activation, inhibiting the inflammatory cytokine-mediated induction of adhesion molecule expression and immune cell adhesion (PMID:15718498). KLF2-null mice exhibit abnormal blood vessel formation, resulting in embryonic haemorrhage and death (PMID: 32132543). KLF2 can be detected 60 kDa by post-translationally modified (PMID: 36466816).

Notable Publications

Author	Pubmed ID	Journal	Application
R Pathak	25039491	J Thromb Haemost	WB,IP

Storage

Storage:

Store at -20°C. Stable for one year after shipment.

Storage Buffer:

PBS with 0.02% sodium azide and 50% glycerol pH 7.3.

Aliquoting is unnecessary for -20°C storage

For technical support and original validation data for this product please contact:

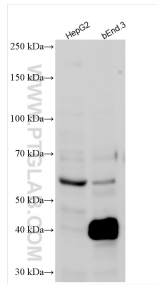
T: 4006900926

E: Proteintech-CN@ptglab.com

W: ptgcn.com

This product is exclusively available under Proteintech Group brand and is not available to purchase from any other manufacturer.

Selected Validation Data



Various lysates were subjected to SDS PAGE followed by western blot with 23384-1-AP (KLF2 antibody) at dilution of 1:800 incubated at room temperature for 1.5 hours.