

# FKBPL Polyclonal antibody

Catalog Number: 23369-1-AP

## Basic Information

<b>Catalog Number:</b> 23369-1-AP	<b>GenBank Accession Number:</b> BC004168	<b>Purification Method:</b> Antigen affinity purification
<b>Size:</b> 1500 µg/ml	<b>GeneID (NCBI):</b> 63943	<b>Recommended Dilutions:</b> WB 1:500-1:1000
<b>Source:</b> Rabbit	<b>UNIPROT ID:</b> Q9UIM3	IHC 1:100-1:400
<b>Isotype:</b> IgG	<b>Full Name:</b> FK506 binding protein like	IF/ICC 1:200-1:800
<b>Immunogen Catalog Number:</b> AG19702	<b>Calculated MW:</b> 349 aa, 38 kDa	
	<b>Observed MW:</b> 42-48 kDa	

## Applications

<b>Tested Applications:</b> WB, IHC, IF/ICC, FC (Intra), ELISA	<b>Positive Controls:</b>
<b>Species Specificity:</b> human	WB : HeLa cells,
<b>Note-IHC:</b> suggested antigen retrieval with <b>TE buffer pH 9.0; (*) Alternatively, antigen retrieval may be performed with citrate buffer pH 6.0</b>	IHC : human ovary tumor tissue,
	IF/ICC : HeLa cells,

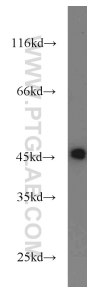
## Background Information

FKBPL, also named as DIR1, NG7 and WISp39, has similarity to the immunophilin protein family, which plays a role in immunoregulation and basic cellular processes involving protein folding and trafficking. FKBPL levels may be a prognostic indicator and determinant of response to endocrine therapy (PMID:20103631, 15664193). It can be detected the band between 38 kDa and 48 kDa by western blot.

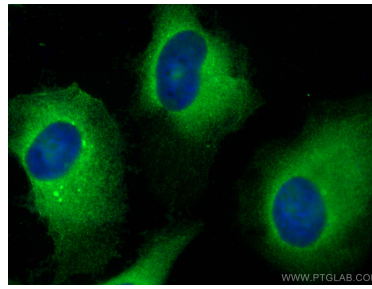
## Storage

**Storage:**  
Store at -20°C. Stable for one year after shipment.  
**Storage Buffer:**  
PBS with 0.02% sodium azide and 50% glycerol pH 7.3.  
Aliquoting is unnecessary for -20°C storage

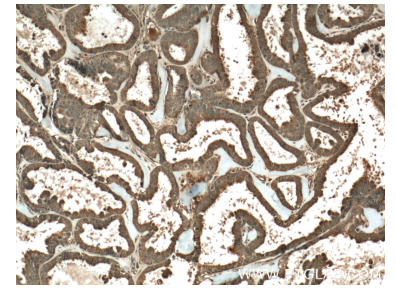
## Selected Validation Data



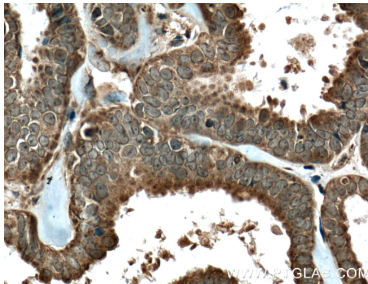
HeLa cells were subjected to SDS PAGE followed by western blot with 23369-1-AP (FKBPL antibody) at dilution of 1:800 incubated at room temperature for 1.5 hours.



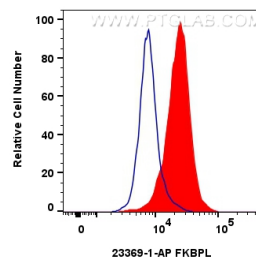
Immunofluorescent analysis of (-20°C Methanol) fixed HeLa cells using FKBP1 antibody (23369-1-AP) at dilution of 1:400 and CoraLite®488-Conjugated AffiniPure Goat Anti-Rabbit IgG(H+L) (SA00013-2).



Immunohistochemical analysis of paraffin-embedded human ovary tumor tissue slide using 23369-1-AP (FKBPL Antibody) at dilution of 1:200 (under 10x lens). Heat mediated antigen retrieval with Tris-EDTA buffer (pH 9.0).



Immunohistochemical analysis of paraffin-embedded human ovary tumor tissue slide using 23369-1-AP (FKBPL Antibody) at dilution of 1:200 (under 40x lens). Heat mediated antigen retrieval with Tris-EDTA buffer (pH 9.0).



1x10<sup>6</sup> HeLa cells were intracellularly stained with 0.4 ug FKBP1 Polyclonal antibody (23369-1-AP) and CoraLite®488-Conjugated AffiniPure Goat Anti-Rabbit IgG(H+L) (SA00013-2)(red), or 0.4 ug Rabbit IgG control Rabbit PolyAb (30000-0-AP) (blue). Cells were fixed with 4% PFA and permeabilized with Flow Cytometry Perm Buffer (PF00011-C).