

For Research Use Only

FOLR1 Polyclonal antibody

Catalog Number: 23355-1-AP

Featured Product

11 Publications



Basic Information

Catalog Number: 23355-1-AP	GenBank Accession Number: BC002947	Purification Method: Antigen affinity purification
Size: 650 µg/ml	GeneID (NCBI): 2348	Recommended Dilutions: WB 1:2000-1:12000 IHC 1:50-1:500 IF 1:20-1:200
Source: Rabbit	UNIPROT ID: P15328	
Isotype: IgG	Full Name: folate receptor 1 (adult)	
Immunogen Catalog Number: AG19959	Calculated MW: 257 aa, 30 kDa Observed MW: 38 kDa	

Applications

Tested Applications: IF/ICC, IHC, WB, ELISA	Positive Controls: WB : HeLa cells, JAR cells IHC : human breast cancer tissue, IF : HeLa cells,
Cited Applications: WB, IF, IHC	
Species Specificity: human	
Cited Species: human, rat, Camelus bactrianus	
Note-IHC: suggested antigen retrieval with TE buffer pH 9.0; (*) Alternatively, antigen retrieval may be performed with citrate buffer pH 6.0	

Background Information

Folate receptor 1 (FOLR1), also known as folate receptor alpha or adult folate-binding protein (FBP), is a 38-kDa glycoprotein belonging to the folate receptor family (PMID:15094207; 23528302). The receptor binds to folate and reduced folic acid derivatives and mediates delivery of 5-methyltetrahydrofolate to the interior of cells. FOLR1 is a secreted protein that either anchors to membranes via a glycosyl-phosphatidylinositol linkage or exists in a soluble form. FOLR1 expression is often limited to the apical surfaces of epithelium in the lung, kidney and choroid plexus but is differentially overexpressed in a variety of solid tumors such as ovarian cancer, non-small cell lung cancer, breast cancer, kidney cancer and high-grade osteosarcoma (PMID: 23528302; 23357463).

Notable Publications

Author	Pubmed ID	Journal	Application
Xiao Han	36054333	Hum Mutat	WB,IF
Divinah Manoharan	33974409	ACS Nano	WB,IHC
Jing Liu	33970635	J Am Chem Soc	WB

Storage

Storage:
Store at -20°C. Stable for one year after shipment.
Storage Buffer:
PBS with 0.02% sodium azide and 50% glycerol pH 7.3.
Aliquoting is unnecessary for -20°C storage

For technical support and original validation data for this product please contact:

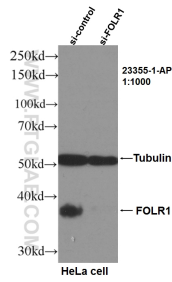
T: 4006900926

E: Proteintech-CN@ptglab.com

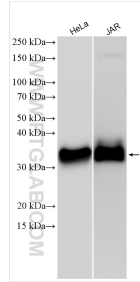
W: ptgcn.com

This product is exclusively available under Proteintech Group brand and is not available to purchase from any other manufacturer.

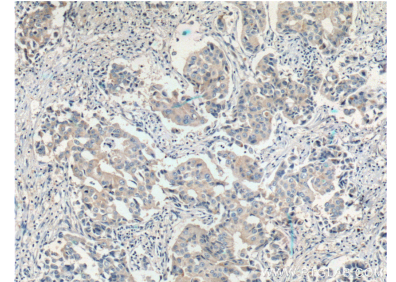
Selected Validation Data



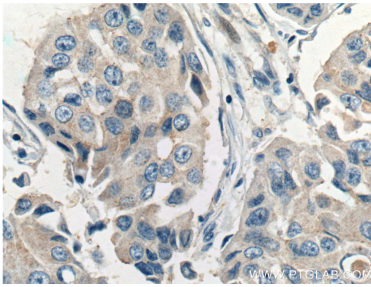
WB result of FOLR1 antibody (23355-1-AP, 1:1000) with si-Control and si-FOLR1 transfected HeLa cells.



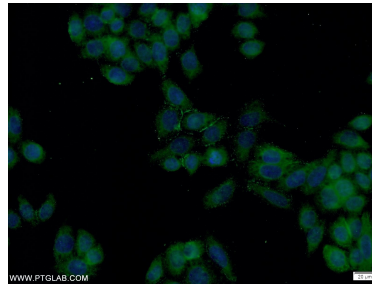
Various lysates were subjected to SDS PAGE followed by western blot with 23355-1-AP (FOLR1 antibody) at dilution of 1:6000 incubated at room temperature for 1.5 hours.



Immunohistochemical analysis of paraffin-embedded human breast cancer tissue slide using 23355-1-AP (FOLR1 Antibody) at dilution of 1:200 (under 10x lens). Heat mediated antigen retrieval with Tris-EDTA buffer (pH 9.0).



Immunohistochemical analysis of paraffin-embedded human breast cancer tissue slide using 23355-1-AP (FOLR1 Antibody) at dilution of 1:200 (under 40x lens). Heat mediated antigen retrieval with Tris-EDTA buffer (pH 9.0).



Immunofluorescent analysis of HeLa cells using 23355-1-AP (FOLR1 antibody) at dilution of 1:50 and Alexa Fluor 488-conjugated AffiniPure Goat Anti-Rabbit IgG(H+L).