

KDEL C2 Polyclonal antibody

Catalog Number: 23345-1-AP

Basic Information

Catalog Number:

23345-1-AP

Size:

800 µg/ml

Source:

Rabbit

Isotype:

IgG

Immunogen Catalog Number:

AG19929

GenBank Accession Number:

BC036526

GeneID (NCBI):

143888

UNIPROT ID:

Q7Z4H8

Full Name:

KDEL (Lys-Asp-Glu-Leu) containing 2

Calculated MW:

507 aa, 59 kDa

Observed MW:

62 kDa

Purification Method:

Antigen affinity purification

Recommended Dilutions:

WB 1:500-1:1000

IHC 1:50-1:500

IF/ICC 1:20-1:200

Applications

Tested Applications:

WB, IHC, IF/ICC, ELISA

Species Specificity:

human

Note-IHC: suggested antigen retrieval with **TE buffer pH 9.0; (*)** Alternatively, antigen retrieval may be performed with **citrate buffer pH 6.0**

Positive Controls:

WB : HeLa cells, human placenta tissue, SMMC-7721 cells

IHC : human breast cancer tissue, human placenta tissue

IF/ICC : HepG2 cells,

Background Information

Storage

Storage:

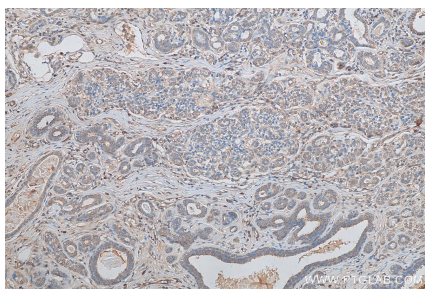
Store at -20°C. Stable for one year after shipment.

Storage Buffer:

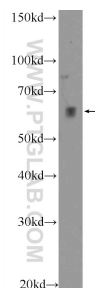
PBS with 0.02% sodium azide and 50% glycerol pH 7.3.

Aliquoting is unnecessary for -20°C storage

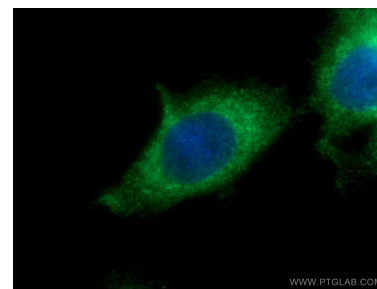
Selected Validation Data



Immunohistochemical analysis of paraffin-embedded human breast cancer tissue slide using 23345-1-AP (KDEL2 antibody) at dilution of 1:200 (under 40x lens). Heat mediated antigen retrieval with Tris-EDTA buffer (pH 9.0).



HeLa cells were subjected to SDS PAGE followed by western blot with 23345-1-AP (KDEL2 Antibody) at dilution of 1:600 incubated at room temperature for 1.5 hours.



Immunofluorescent analysis of HepG2 cells using 23345-1-AP (KDEL2 antibody) at dilution of 1:50 and Alexa Fluor 488-conjugated AffiniPure Goat Anti-Rabbit IgG(H+L).