

For Research Use Only

# Eg5 Polyclonal antibody

Catalog Number: 23333-1-AP

Featured Product

23 Publications



## Basic Information

### Catalog Number:

23333-1-AP

### Concentration:

400 µg/ml

### Source:

Rabbit

### Isotype:

IgG

### Immunogen Catalog Number:

AG18695

### GenBank Accession Number:

BC136474

### GeneID (NCBI):

3832

### UNIPROT ID:

P52732

### Full Name:

kinesin family member 11

### Calculated MW:

1056 aa, 119 kDa

### Observed MW:

120-130 kDa

### Purification Method:

Antigen Affinity purified

### Recommended Dilutions:

WB 1:1000-1:4000

IP 0.5-4.0 µg for 1.0-3.0 mg of total protein lysate

IHC 1:200-1:800

IF/ICC 1:200-1:800

## Applications

### Tested Applications:

WB, IHC, IF/ICC, IP, ELISA

### Cited Applications:

WB, IHC, IF

### Species Specificity:

human

### Cited Species:

human, mouse

### Positive Controls:

**WB**: HEK-293 cells, HeLa cells, Jurkat cells, K-562 cells, Raji cells

**IP**: Raji cells,

**IHC**: human lung cancer tissue, human endometrial cancer tissue, human prostate hyperplasia tissue

**IF/ICC**: HepG2 cells,

**Note-IHC: suggested antigen retrieval with TE buffer pH 9.0; (\*) Alternatively, antigen retrieval may be performed with citrate buffer pH 6.0**

## Background Information

Eg5 is a plus-end-directed microtubule motor encoded by KIF11 gene. It is an essential mitotic kinesin that plays a pivotal role in the formation and maintenance of bipolar spindle during early prometaphase. Eg5 has been implicated in tumorigenesis, and its overexpression has been found in various cancer tissues.

## Notable Publications

Author	Pubmed ID	Journal	Application
Yuanyuan Shi	36123339	Cell Death Dis	WB, IHC
Xie Mengyan	36176446	Front Pharmacol	WB
Xishan Li	32509165	Am J Transl Res	WB

## Storage

### Storage:

Store at -20°C. Stable for one year after shipment.

### Storage Buffer:

PBS with 0.02% sodium azide and 50% glycerol pH 7.3.

Aliquoting is unnecessary for -20°C storage

For technical support and original validation data for this product please contact:

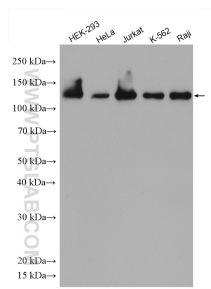
T: 4006900926

E: Proteintech-CN@ptglab.com

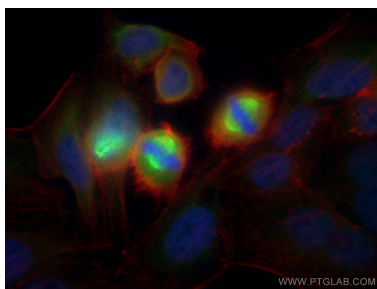
W: ptgcn.com

This product is exclusively available under Proteintech Group brand and is not available to purchase from any other manufacturer.

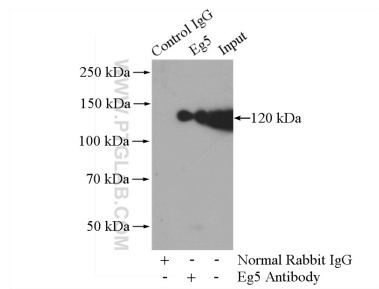
Selected Validation Data



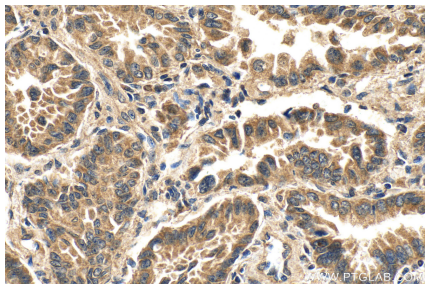
Various lysates were subjected to SDS PAGE followed by western blot with 23333-1-AP (Eg5 antibody) at dilution of 1:4000 incubated at room temperature for 1.5 hours.



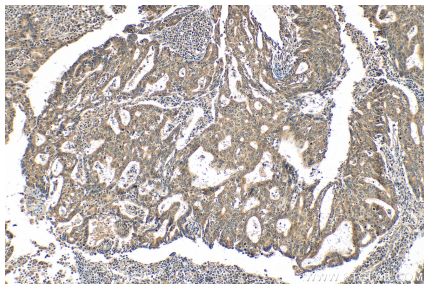
Immunofluorescent analysis of (4% PFA) fixed HepG2 cells using Eg5 antibody (23333-1-AP) at dilution of 1:400 and CoraLite®488-Conjugated Goat Anti-Rabbit IgG(H+L), CL594-phalloidin (red).



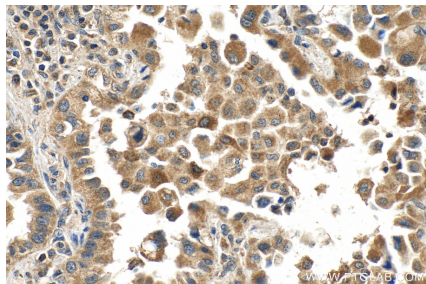
IP result of anti-Eg5 (IP:23333-1-AP, 4ug; Detection:23333-1-AP 1:1000) with Raji cells lysate 2000ug.



Immunohistochemical analysis of paraffin-embedded human lung cancer tissue slide using 23333-1-AP (Eg5 antibody) at dilution of 1:400 (under 40x lens). Heat mediated antigen retrieval with Tris-EDTA buffer (pH 9.0).



Immunohistochemical analysis of paraffin-embedded human endometrial cancer tissue slide using 23333-1-AP (Eg5 antibody) at dilution of 1:400 (under 10x lens). Heat mediated antigen retrieval with Tris-EDTA buffer (pH 9.0).



Immunohistochemical analysis of paraffin-embedded human lung cancer tissue slide using 23333-1-AP (Eg5 antibody) at dilution of 1:400 (under 10x lens). Heat mediated antigen retrieval with Tris-EDTA buffer (pH 9.0).