

LGALS3BP Polyclonal antibody

Catalog Number: 23307-1-AP

Basic Information

Catalog Number:

23307-1-AP

Source:

Rabbit

Isotype:

IgG

Immunogen Catalog Number:

AG19700

GenBank Accession Number:

BC002403

GeneID (NCBI):

3959

UNIPROT ID:

Q08380

Full Name:

lectin, galactoside-binding, soluble, 3
binding protein

Calculated MW:

585 aa, 65 kDa

Observed MW:

65-70 kDa

Purification Method:

Antigen affinity purification

Recommended Dilutions:

WB: 1:500-1:2000

IHC: 1:20-1:200

IF/ICC: 1:200-1:800

Applications

Tested Applications:

WB, IHC, IF/ICC, ELISA

Species Specificity:

human, mouse

**Note-IHC: suggested antigen retrieval with
TE buffer pH 9.0; (*) Alternatively, antigen
retrieval may be performed with citrate
buffer pH 6.0**

Positive Controls:

WB: HepG2 cells, mouse brain tissue

IHC: human breast cancer tissue, human skin tissue

IF/ICC: HepG2 cells, A431 cells

Background Information

The galectins are a family of beta-galactoside-binding proteins implicated in modulating cell-cell and cell-matrix interactions. Galectin-3-binding protein (LGALS3BP, also known as 90K or Mac-2 BP) is a secreted glycoprotein which binds galectin-3, galectin-1, beta1 integrins, collagens and fibronectin (PMID: 8034587; 8024581; 11146440; 9501082). It has been implicated in tumor metastatic processes, as well as in other cell adhesion and immune functions. Levels of LGALS3BP have been found elevated in the serum of patients with cancer and in those infected by the human immunodeficiency virus (HIV) (PMID: 7698018). Western analysis suggests that LGALS3BP is found in breast milk, semen, saliva, urine, and tears, in addition to serum (PMID: 8390986).

Storage

Storage:

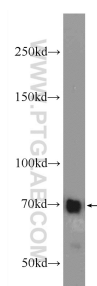
Store at -20°C. Stable for one year after shipment.

Storage Buffer:

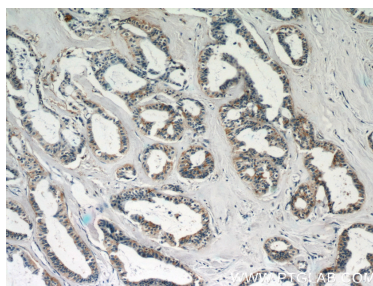
PBS with 0.02% sodium azide and 50% glycerol, pH7.3

Aliquoting is unnecessary for -20°C storage

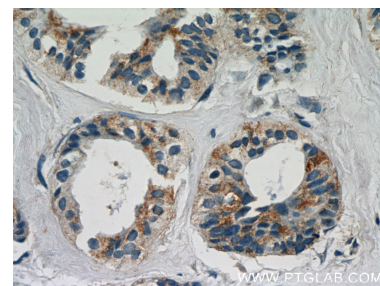
Selected Validation Data



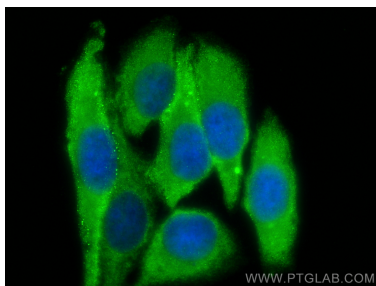
HepG2 cells were subjected to SDS PAGE followed by western blot with 23307-1-AP (LGALS3BP antibody) at dilution of 1:1000 incubated at room temperature for 1.5 hours.



Immunohistochemical analysis of paraffin-embedded human breast cancer slide using 23307-1-AP (LGALS3BP Antibody) at dilution of 1:50 (under 10x lens).



Immunohistochemical analysis of paraffin-embedded human breast cancer slide using 23307-1-AP (LGALS3BP Antibody) at dilution of 1:50 (under 40x lens).



Immunofluorescent analysis of (-20°C Ethanol) fixed HepG2 cells using LGALS3BP antibody (23307-1-AP) at dilution of 1:400 and CoraLite®488-Conjugated Goat Anti-Rabbit IgG(H+L) (SA00013-2).