

For Research Use Only

# WWTR1/TAZ Polyclonal antibody

Catalog Number: 23306-1-AP

Featured Product

59 Publications



## Basic Information

### Catalog Number:

23306-1-AP

### Concentration:

600 ug/ml

### Source:

Rabbit

### Isotype:

IgG

### Immunogen Catalog Number:

AG19659

### GenBank Accession Number:

BC014052

### GeneID (NCBI):

25937

### UNIPROT ID:

Q9GZV5

### Full Name:

WW domain containing transcription regulator 1

### Calculated MW:

44 kDa

### Observed MW:

50 kDa

### Purification Method:

Antigen affinity purification

### Recommended Dilutions:

WB 1:1000-1:8000

IP 0.5-4.0 ug for 1.0-3.0 mg of total protein lysate

IHC 1:50-1:500

IF-P 1:50-1:500

IF/ICC 1:50-1:500

## Applications

### Tested Applications:

WB, IHC, IF/ICC, IF-P, IP, ELISA

### Cited Applications:

WB, IHC, IF, IP, CoIP, ChIP

### Species Specificity:

human, rat

### Cited Species:

human, mouse, rat

**Note-IHC: suggested antigen retrieval with TE buffer pH 9.0; (\*) Alternatively, antigen retrieval may be performed with citrate buffer pH 6.0**

### Positive Controls:

WB : HeLa cells, LN229 cells, MDA-MB-453s cells

IP : MDA-MB-453s cells,

IHC : human ovary cancer tissue,

IF-P : rat kidney tissue,

IF/ICC : U-251 cells,

## Background Information

TAZ, also referred as WWTR1, is a transcriptional co-activator with a PDZ-binding motif that is regulated by its interaction with 14-3-3 protein. TAZ is expressed in many primary tumors, such as breast cancer, thyroid carcinoma, colorectal cancer, and glioma (PMID: 22003437, PMID: 27764783). TAZ has been reported to be one of the nuclear effectors of Hippo-related pathways that regulate organ size control, cancer stem cell (CSC) properties, and epithelial-mesenchymal transition (EMT). TAZ has been defined for its role in the nucleus, where it functions directly as a transcriptional regulator by interacting with several nuclear factors as Runx2/Cbfa1, NHERF-2, TEF-1, TBX5, PAX3, PAX8 and TTF-1.

## Notable Publications

Author	Pubmed ID	Journal	Application
Bang-Yi Lin	32969138	J Cell Mol Med	WB
Chunxu Luo	32914480	Phytother Res	WB
Wen Zhao	34490599	Histol Histopathol	WB,IHC

## Storage

### Storage:

Store at -20°C. Stable for one year after shipment.

### Storage Buffer:

PBS with 0.02% sodium azide and 50% glycerol pH 7.3.

Aliquoting is unnecessary for -20°C storage

For technical support and original validation data for this product please contact:

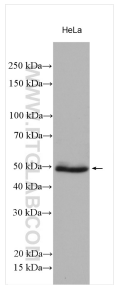
T: 4006900926

E: Proteintech-CN@ptglab.com

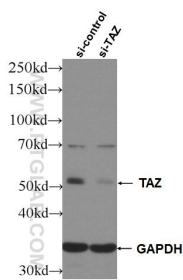
W: ptgcn.com

**This product is exclusively available under Proteintech Group brand and is not available to purchase from any other manufacturer.**

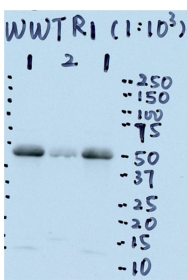
Selected Validation Data



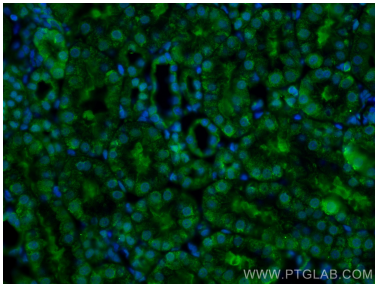
HeLa cells were subjected to SDS PAGE followed by western blot with 23306-1-AP (TAZ antibody) at dilution of 1:4000 incubated at room temperature for 1.5 hours.



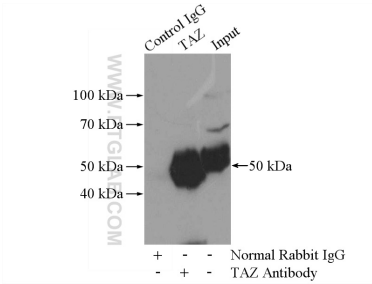
WB result of TAZ antibody (23306-1-AP; 1:8000; incubated at room temperature for 1.5 hours) with sh-Control and sh-TAZ transfected HeLa cells.



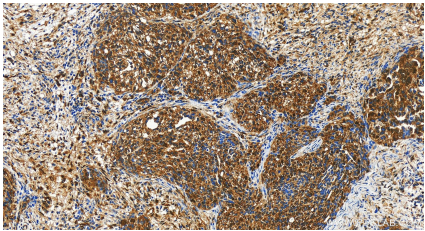
WB result of WWTR1 antibody (TAZ antibody, 23306-1-AP, 1:1000) with LN229 cell lysate by Dr. Xiaobing He. (Lane 1, LN229 (GBM cell line) cell lysate. 90 ug; Lane 2, LN229 growth inhibition treatment. 90 ug).



Immunofluorescent analysis of (4% PFA) fixed rat kidney tissue using WWTR1 antibody (23306-1-AP) at dilution of 1:200 and CoraLite®488-Conjugated AffiniPure Goat Anti-Rabbit IgG(H+L).



IP result of anti-WWTR1 (IP:23306-1-AP, 4ug; Detection:23306-1-AP 1:300) with MDA-MB-453s cells lysate 2800ug.



Immunohistochemical analysis of paraffin-embedded human ovary cancer tissue slide using 23306-1-AP (WWTR1 antibody) at dilution of 1:200 (under 20x lens). Heat mediated antigen retrieval with Tris-EDTA buffer (pH 9.0).



Immunofluorescent analysis of (4% PFA) fixed U-251 cells using WWTR1 antibody (23306-1-AP) at dilution of 1:200 and CoraLite®488-Conjugated AffiniPure Goat Anti-Rabbit IgG(H+L) (SA00013-2), CL594-phalloidin (red).