

For Research Use Only

PINK1 Polyclonal antibody, PBS Only

Catalog Number: 23274-1-PBS

Featured Product



Basic Information

Catalog Number:

23274-1-PBS

Source:

Rabbit

Isotype:

IgG

Immunogen Catalog Number:

AG19825

GenBank Accession Number:

BC028215

GeneID (NCBI):

65018

UNIPROT ID:

Q9BXM7

Full Name:

PTEN induced putative kinase 1

Calculated MW:

581 aa, 63 kDa

Observed MW:

65 kDa, 45 kDa

Purification Method:

Antigen Affinity purified

Applications

Tested Applications:

WB, IHC, IF-P, ELISA

Species Specificity:

human, mouse, rat

Background Information

PINK1 is a mitochondrial serine/threonine-protein kinase that protects cells from stress-induced mitochondrial dysfunction. The precursor of PINK1 (65 kDa) is synthesized in the cytosol and is imported into the outer membrane of mitochondria. PINK1 is further transferred into the inner membrane. The full-length PINK1 can be proteolytically processed into 52-55 kDa and 45-46 kDa forms (PMID: 18221368; 25108683; 18031932). The half-life of the mature form of PINK1 is very short and it was proposed that the proteasome is involved in its degradation (PMID: 23472196). The gene of PINK1 maps to chromosome 1p36.12. Two alternatively spliced variants exist, the shorter isoform (30 kDa) produced by alternative splicing. Mutations in the PINK1 gene cause autosomal recessive early-onset Parkinson's disease.

Storage

Storage:

Store at -80°C.

The product is shipped with ice packs. Upon receipt, store it immediately at -80°C

Storage Buffer:

PBS only, pH7.3

For technical support and original validation data for this product please contact:

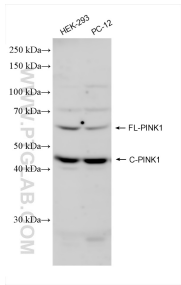
T: 4006900926

E: Proteintech-CN@ptglab.com

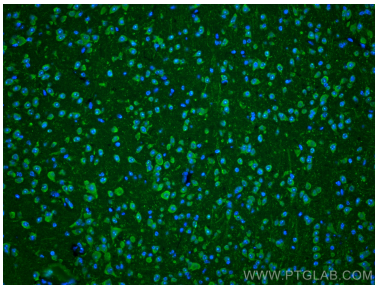
W: ptgcn.com

This product is exclusively available under Proteintech Group brand and is not available to purchase from any other manufacturer.

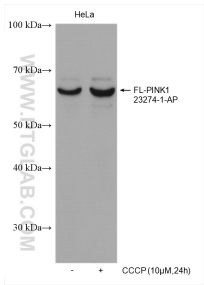
Selected Validation Data



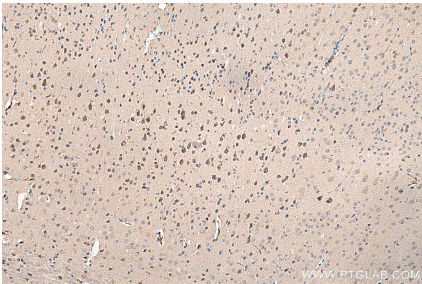
Various lysates were subjected to SDS PAGE followed by western blot with 23274-1-AP (PINK1 antibody) at dilution of 1:2000 incubated at room temperature for 1.5 hours. This data was developed using the same antibody clone with 23274-1-PBS in a different storage buffer formulation.



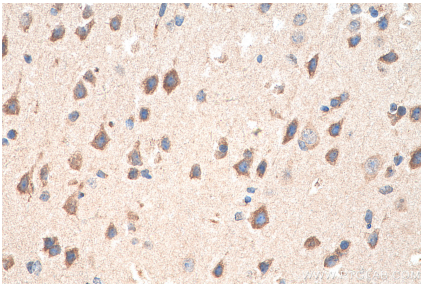
Immunofluorescent analysis of (4% PFA) fixed mouse brain tissue using PINK1 antibody (23274-1-AP) at dilution of 1:400 and CoraLite®488-Conjugated AffiniPure Goat Anti-Rabbit IgG(H+L). This data was developed using the same antibody clone with 23274-1-PBS in a different storage buffer formulation.



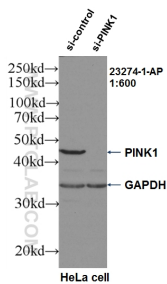
Non-treated and CCCP treated HeLa cells were subjected to SDS PAGE followed by western blot with 23274-1-AP (PINK1 antibody) at dilution of 1:1000 incubated at room temperature for 1.5 hours. This data was developed using the same antibody clone with 23274-1-PBS in a different storage buffer formulation.



Immunohistochemical analysis of paraffin-embedded mouse brain tissue slide using 23274-1-AP (PINK1 antibody) at dilution of 1:2000 (under 10x lens). Heat mediated antigen retrieval with Tris-EDTA buffer (pH 9.0). This data was developed using the same antibody clone with 23274-1-PBS in a different storage buffer formulation.



Immunohistochemical analysis of paraffin-embedded mouse brain tissue slide using 23274-1-AP (PINK1 antibody) at dilution of 1:2000 (under 40x lens). Heat mediated antigen retrieval with Tris-EDTA buffer (pH 9.0). This data was developed using the same antibody clone with 23274-1-PBS in a different storage buffer formulation.



WB result of PINK1 antibody (23274-1-AP, 1:600) with si-Control and si-PINK1 transfected HeLa cells. This data was developed using the same antibody clone with 23274-1-PBS in a different storage buffer formulation.