

For Research Use Only

# RSPH9 Polyclonal antibody

Catalog Number: 23253-1-AP

9 Publications



## Basic Information

Catalog Number:

23253-1-AP

Concentration:

800 ug/ml

Source:

Rabbit

Isotype:

IgG

Immunogen Catalog Number:

AG19745

GenBank Accession Number:

BC029519

GeneID (NCBI):

221421

UNIPROT ID:

Q9H1X1

Full Name:

radial spoke head 9 homolog  
(Chlamydomonas)

Calculated MW:

276 aa, 31 kDa

Observed MW:

31-35 kDa

Purification Method:

Antigen Affinity purified

Recommended Dilutions:

WB 1:500-1:1000

IHC 1:50-1:500

## Applications

Tested Applications:

WB, IHC, ELISA

Cited Applications:

WB, IF

Species Specificity:

human, mouse, rat

Cited Species:

human, mouse

**Note-IHC: suggested antigen retrieval with  
TE buffer pH 9.0; (\*) Alternatively, antigen  
retrieval may be performed with citrate  
buffer pH 6.0**

Positive Controls:

WB : mouse testis tissue, NIH/3T3 cells, rat testis tissue

IHC : rat brain tissue,

## Background Information

RSPH9 (Radial Spoke Head 9 Homolog) is a protein involved in the structure and function of cilia and flagella. Cilia and flagella are hair-like structures that extend from the surface of many eukaryotic cells and play critical roles in cell motility, sensory perception, and signaling. The RSPH9 protein is a component of the radial spoke, a structure within the axoneme (the core of cilia and flagella) that is essential for the regulation of ciliary and flagellar movement.

## Notable Publications

Author	Pubmed ID	Journal	Application
Xin Zhang	36417862	Cell Rep	WB, IF
Jintao Zhang	34169321	Hum Mol Genet	WB, IF
Shushu Zhou	35388187	Eur J Hum Genet	

## Storage

Storage:

Store at -20°C. Stable for one year after shipment.

Storage Buffer:

PBS with 0.02% sodium azide and 50% glycerol pH 7.3.

Aliquoting is unnecessary for -20°C storage

For technical support and original validation data for this product please contact:

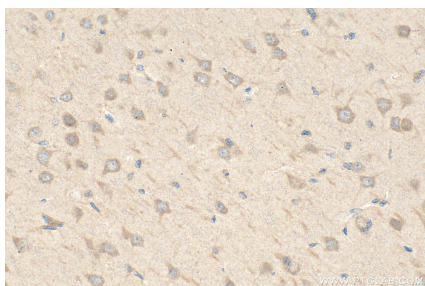
T: 4006900926

E: [Proteintech-CN@ptglab.com](mailto:Proteintech-CN@ptglab.com)

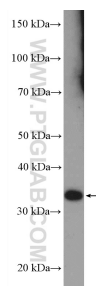
W: [ptgcn.com](http://ptgcn.com)

**This product is exclusively available under Proteintech Group brand and is not available to purchase from any other manufacturer.**

## Selected Validation Data



Immunohistochemical analysis of paraffin-embedded rat brain tissue slide using 23253-1-AP (RSPH9 antibody) at dilution of 1:200 (under 40x lens). Heat mediated antigen retrieval with Tris-EDTA buffer (pH 9.0).



mouse testis tissue were subjected to SDS PAGE followed by western blot with 23253-1-AP (RSPH9 Antibody) at dilution of 1:600 incubated at room temperature for 1.5 hours.