

WT1 Polyclonal antibody

Catalog Number: 23235-1-AP

Basic Information

Catalog Number: 23235-1-AP	GenBank Accession Number: BC032861	Purification Method: Antigen affinity purification
Size: N/A	GeneID (NCBI): 7490	Recommended Dilutions: WB 1:200-1:1000
Source: Rabbit	UNIPROT ID: P19544	
Isotype: IgG	Full Name: Wilms tumor 1	
Immunogen Catalog Number: AG19541	Calculated MW: 449 aa, 49 kDa, 57 kDa	

Applications

Tested Applications: WB, ELISA	Positive Controls: WB : mouse kidney tissue,
Species Specificity: human	

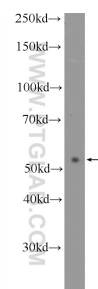
Background Information

The WT1 gene encodes a zinc finger DNA-binding protein that acts as a transcriptional activator or repressor depending on the cellular or chromosomal context, and it is required for normal formation of the genitourinary system and mesothelial tissues. WT1 inhibits apoptosis through p53 and Bcl-2 and also inhibits the differentiation of leukemic cells. Function of WT1 may be isoform-specific: isoforms lacking the KTS motif may act as transcription factors. Isoforms containing the KTS motif may bind mRNA and play a role in mRNA metabolism or splicing. Isoform 1 has lower affinity for DNA, and can bind RNA.

Storage

Storage:
Store at -20°C. Stable for one year after shipment.
Storage Buffer:
PBS with 0.02% sodium azide and 50% glycerol pH 7.3.
Aliquoting is unnecessary for -20°C storage

Selected Validation Data



mouse kidney tissue were subjected to SDS PAGE followed by western blot with 23235-1-AP (WT1 Antibody) at dilution of 1:300 incubated at room temperature for 1.5 hours.