

MMADHC Polyclonal antibody

Catalog Number: 23191-1-AP

Basic Information

Catalog Number:

23191-1-AP

Size:

450 µg/ml

Source:

Rabbit

Isotype:

IgG

Immunogen Catalog Number:

AG19343

GenBank Accession Number:

BC022859

GeneID (NCBI):

27249

UNIPROT ID:

Q9H3LO

Full Name:

methylmalonic aciduria (cobalamin deficiency) cblD type, with homocystinuria

Calculated MW:

296 aa, 33 kDa

Observed MW:

33 kDa

Purification Method:

Antigen affinity purification

Recommended Dilutions:

WB 1:1000-1:5000

IHC 1:50-1:500

Applications

Tested Applications:

IHC, WB, ELISA

Species Specificity:

human, mouse

Note-IHC: suggested antigen retrieval with TE buffer pH 9.0; (*) Alternatively, antigen retrieval may be performed with citrate buffer pH 6.0

Positive Controls:

WB: HEK-293 cells, HeLa cells, MCF-7 cells, NIH3T3 cells

IHC: human skeletal muscle tissue, human heart tissue, human pancreas tissue

Background Information

MMADHC is a mitochondrial protein that is involved in an early step of vitamin B12 metabolism. Vitamin B12 (cobalamin) is essential for normal development and survival in humans. MMADHC is a 296-amino acids (32.9 kDa) protein with an N-terminal disordered region (amino acids 1-107) containing a potential mitochondrial leader sequence (MLS; amino acids 1-12), and a C-terminal Nitro Reductase-like domain (NTR; amino acids 108-296). Mutations in this gene cause methylmalonic aciduria and homocystinuria type cblD (MMADHC), a disorder of cobalamin metabolism that is characterized by decreased levels of the coenzymes adenosylcobalamin and methylcobalamin.

Storage

Storage:

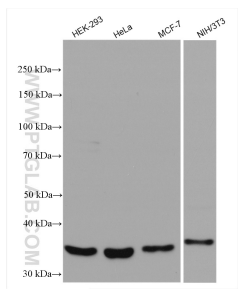
Store at -20°C. Stable for one year after shipment.

Storage Buffer:

PBS with 0.02% sodium azide and 50% glycerol pH 7.3.

Aliquoting is unnecessary for -20°C storage

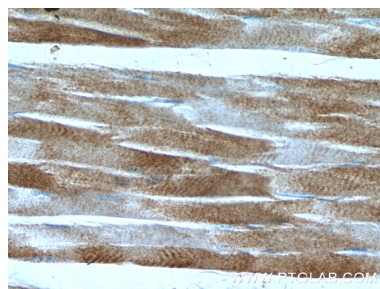
Selected Validation Data



Various lysates were subjected to SDS PAGE followed by western blot with 23191-1-AP (MMADHC antibody) at dilution of 1:2500 incubated at room temperature for 1.5 hours.



Immunohistochemical analysis of paraffin-embedded human skeletal muscle tissue slide using 23191-1-AP (MMADHC Antibody) at dilution of 1:200 (under 10x lens).



Immunohistochemical analysis of paraffin-embedded human skeletal muscle tissue slide using 23191-1-AP (MMADHC Antibody) at dilution of 1:200 (under 40x lens).