

For Research Use Only

# GOLPH3L Polyclonal antibody, PBS Only

Catalog Number: 23153-1-PBS



## Basic Information

Catalog Number:

23153-1-PBS

Concentration:

1 mg/ml

Source:

Rabbit

Isotype:

IgG

Immunogen Catalog Number:

AG19537

GenBank Accession Number:

BC013870

GeneID (NCBI):

55204

UNIPROT ID:

Q9H4A5

Full Name:

golgi phosphoprotein 3-like

Calculated MW:

285 aa, 33 kDa

Observed MW:

33 kDa

Purification Method:

Antigen affinity purification

## Applications

Tested Applications:

WB, IHC, Indirect ELISA

Species Specificity:

human

## Background Information

Golgi phosphoprotein 3 (GOLPH3) is a highly conserved membrane protein that plays an important role in maintaining the structure of the Golgi apparatus and anterograde transport. GOLPH3L (golgi phosphoprotein 3-like) is a GOLPH3 paralogue found in all vertebrate genomes. Compared with the oncogene GOLPH3, little is known about the role and function of GOLPH3L. It has been reported that GOLPH3L is highly expressed in epithelial ovarian cancer tissues, and cervical cancer tissue and is up-regulated in human rhabdomyosarcoma (PMID: 26284141; 28261346; 21822541).

## Storage

Storage:

Store at -80°C.

**The product is shipped with ice packs. Upon receipt, store it immediately at -80°C**

Storage Buffer:

PBS only, pH7.3

For technical support and original validation data for this product please contact:

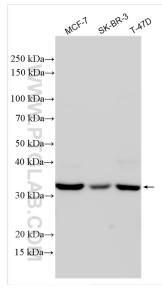
T: 4006900926

E: [Proteintech-CN@ptglab.com](mailto:Proteintech-CN@ptglab.com)

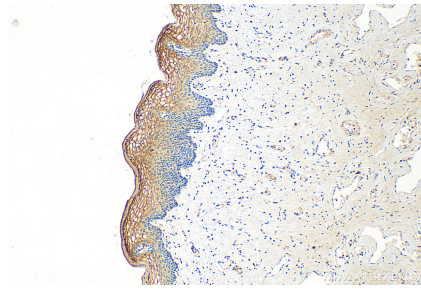
W: [ptgcn.com](http://ptgcn.com)

**This product is exclusively available under Proteintech Group brand and is not available to purchase from any other manufacturer.**

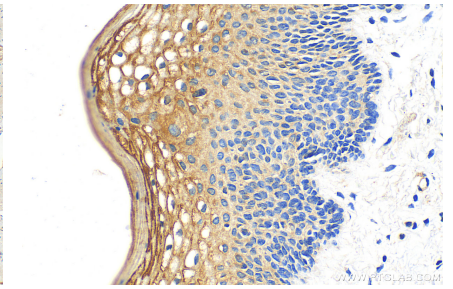
## Selected Validation Data



Various lysates were subjected to SDS PAGE followed by western blot with 23153-1-AP (GOLPH3L antibody) at dilution of 1:4000 incubated at room temperature for 1.5 hours. This data was developed using the same antibody clone with 23153-1-PBS in a different storage buffer formulation.



Immunohistochemical analysis of paraffin-embedded human cervical cancer tissue slide using 23153-1-AP (GOLPH3L antibody) at dilution of 1:400 (under 10x lens). Heat mediated antigen retrieval with Tris-EDTA buffer (pH 9.0). This data was developed using the same antibody clone with 23153-1-PBS in a different storage buffer formulation.



Immunohistochemical analysis of paraffin-embedded human cervical cancer tissue slide using 23153-1-AP (GOLPH3L antibody) at dilution of 1:400 (under 40x lens). Heat mediated antigen retrieval with Tris-EDTA buffer (pH 9.0). This data was developed using the same antibody clone with 23153-1-PBS in a different storage buffer formulation.