

For Research Use Only

# GOLPH3L Polyclonal antibody

Catalog Number: 23153-1-AP



## Basic Information

Catalog Number:	GenBank Accession Number:	Purification Method:
23153-1-AP	BC013870	Antigen affinity purification
Size:	GeneID (NCBI):	Recommended Dilutions:
500 ug/ml	55204	WB 1:1000-1:8000
Source:	UNIPROT ID:	IHC 1:200-1:800
Rabbit	Q9H4A5	
Isotype:	Full Name:	
IgG	golgi phosphoprotein 3-like	
Immunogen Catalog Number:	Calculated MW:	
AG19537	285 aa, 33 kDa	
	Observed MW:	
	33 kDa	

## Applications

Tested Applications:	Positive Controls:
WB, IHC, ELISA	WB : MCF-7 cells, SK-BR-3 cells, T-47D cells
Species Specificity:	IHC : human cervical cancer tissue,
human	
<b>Note-IHC: suggested antigen retrieval with TE buffer pH 9.0; (*) Alternatively, antigen retrieval may be performed with citrate buffer pH 6.0</b>	

## Background Information

Golgi phosphoprotein 3 (GOLPH3) is a highly conserved membrane protein that plays an important role in maintaining the structure of the Golgi apparatus and anterograde transport. GOLPH3L (golgi phosphoprotein 3-like) is a GOLPH3 paralogue found in all vertebrate genomes. Compared with the oncogene GOLPH3, little is known about the role and function of GOLPH3L. It has been reported that GOLPH3L is highly expressed in epithelial ovarian cancer tissues, and cervical cancer tissue and is up-regulated in human rhabdomyosarcoma (PMID: 26284141; 28261346; 21822541).

## Storage

**Storage:**  
Store at -20°C. Stable for one year after shipment.  
**Storage Buffer:**  
PBS with 0.02% sodium azide and 50% glycerol pH 7.3.  
Aliquoting is unnecessary for -20°C storage

For technical support and original validation data for this product please contact:

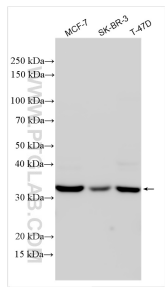
T: 4006900926

E: [Proteintech-CN@ptglab.com](mailto:Proteintech-CN@ptglab.com)

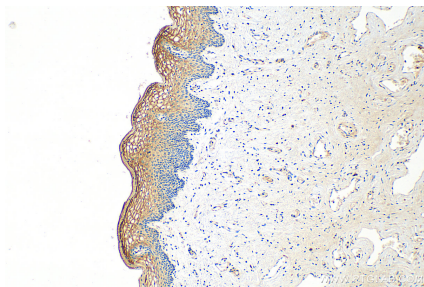
W: [ptgcn.com](http://ptgcn.com)

This product is exclusively available under Proteintech Group brand and is not available to purchase from any other manufacturer.

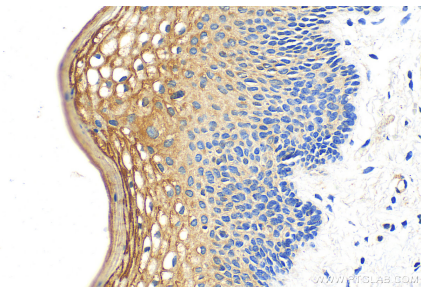
## Selected Validation Data



Various lysates were subjected to SDS PAGE followed by western blot with 23153-1-AP (GOLPH3L antibody) at dilution of 1:4000 incubated at room temperature for 1.5 hours.



Immunohistochemical analysis of paraffin-embedded human cervical cancer tissue slide using 23153-1-AP (GOLPH3L antibody) at dilution of 1:400 (under 10x lens). Heat mediated antigen retrieval with Tris-EDTA buffer (pH 9.0).



Immunohistochemical analysis of paraffin-embedded human cervical cancer tissue slide using 23153-1-AP (GOLPH3L antibody) at dilution of 1:400 (under 40x lens). Heat mediated antigen retrieval with Tris-EDTA buffer (pH 9.0).