

For Research Use Only

# REEP3 Polyclonal antibody

Catalog Number: 23140-1-AP



## Basic Information

Catalog Number:

23140-1-AP

Source:

Rabbit

Isotype:

IgG

Immunogen Catalog Number:

AG19400

GenBank Accession Number:

BC068557

GeneID (NCBI):

221035

UNIPROT ID:

Q6NUK4

Full Name:

receptor accessory protein 3

Calculated MW:

255 aa, 29 kDa

Observed MW:

29 kDa

Purification Method:

Antigen affinity purification

Recommended Dilutions:

WB: 1:1000-1:4000

## Applications

Tested Applications:

WB, ELISA

Species Specificity:

human

Positive Controls:

WB : HeLa cells, L02 cells, MCF-7 cells

## Background Information

REEP3 (Receptor Expression-Enhancing Protein 3) is a member of the REEP family of proteins, a transmembrane protein that interacts with odorant receptor proteins and may enhance the odorant receptor responses to odorants. It primarily regulates the tubular morphology of the endoplasmic reticulum by promoting high membrane curvature through its reticular homology domains. During mitosis, REEP3 binds to microtubules, separating the endoplasmic reticulum from chromosomes to ensure proper nuclear membrane remodeling and cell division. (PMID: 23911198; 30995177)

## Storage

Storage:

Store at -20°C. Stable for one year after shipment.

Storage Buffer:

PBS with 0.02% sodium azide and 50% glycerol, pH7.3

Aliquoting is unnecessary for -20°C storage

For technical support and original validation data for this product please contact:

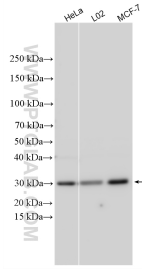
T: 4006900926

E: [Proteintech-CN@ptglab.com](mailto:Proteintech-CN@ptglab.com)

W: [ptgcn.com](http://ptgcn.com)

**This product is exclusively available under Proteintech Group brand and is not available to purchase from any other manufacturer.**

## Selected Validation Data



Various lysates were subjected to SDS PAGE followed by western blot with 23140-1-AP (REEP3 antibody) at dilution of 1:2000 incubated at room temperature for 1.5 hours.