

For Research Use Only

GLIS1 Polyclonal antibody

Catalog Number: 23138-1-AP

2 Publications



Basic Information

Catalog Number:

23138-1-AP

Concentration:

550 µg/ml

Source:

Rabbit

Isotype:

IgG

Immunogen Catalog Number:

AG19214

GenBank Accession Number:

BC101799

GeneID (NCBI):

148979

UNIPROT ID:

Q8NBF1

Full Name:

GLIS family zinc finger 1

Calculated MW:

620 aa, 66 kDa

Observed MW:

66 kDa

Purification Method:

Antigen Affinity purified

Recommended Dilutions:

WB 1:200-1:1000

IHC 1:50-1:500

Applications

Tested Applications:

WB, IHC, ELISA

Cited Applications:

WB, IHC

Species Specificity:

human, mouse

Cited Species:

human

Note-IHC: suggested antigen retrieval with TE buffer pH 9.0; (*) Alternatively, antigen retrieval may be performed with citrate buffer pH 6.0

Positive Controls:

WB : Jurkat cells,

IHC : mouse ovary tissue,

Background Information

Notable Publications

Author	Pubmed ID	Journal	Application
Li Xu	39736678	BMC Biol	WB,IHC
Jiazhen Huang	38157104	Reprod Sci	WB

Storage

Storage:

Store at -20°C. Stable for one year after shipment.

Storage Buffer:

PBS with 0.02% sodium azide and 50% glycerol pH 7.3.

Aliquoting is unnecessary for -20°C storage

For technical support and original validation data for this product please contact:

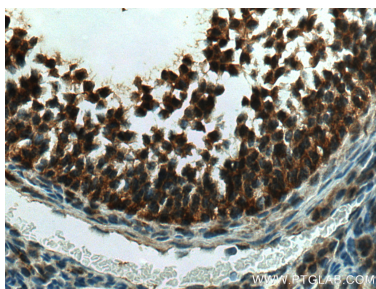
T: 4006900926

E: Proteintech-CN@ptglab.com

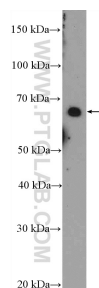
W: ptgcn.com

This product is exclusively available under Proteintech Group brand and is not available to purchase from any other manufacturer.

Selected Validation Data



Immunohistochemical analysis of paraffin-embedded mouse ovary tissue slide using 23138-1-AP (GLIS1 antibody) at dilution of 1:200 (under 40x lens). Heat mediated antigen retrieval with Tris-EDTA buffer (pH 9.0).



Jurkat cells were subjected to SDS PAGE followed by western blot with 23138-1-AP (GLIS1 Antibody) at dilution of 1:300 incubated at room temperature for 1.5 hours.