

For Research Use Only

# ESRP2 Polyclonal antibody

Catalog Number: 23117-1-AP

1 Publications



## Basic Information

Catalog Number:

23117-1-AP

Source:

Rabbit

Isotype:

IgG

Immunogen Catalog Number:

AG19436

GenBank Accession Number:

BC030146

GeneID (NCBI):

80004

UNIPROT ID:

Q9H6T0

Full Name:

epithelial splicing regulatory protein

2

Calculated MW:

727 aa, 78 kDa

Observed MW:

78 kDa

Purification Method:

Antigen affinity purification

Recommended Dilutions:

WB: 1:200-1:1000

IHC: 1:50-1:500

## Applications

Tested Applications:

WB, IHC, ELISA

Species Specificity:

human, mouse

Cited Species:

human

**Note-IHC: suggested antigen retrieval with TE buffer pH 9.0; (\*) Alternatively, antigen retrieval may be performed with citrate buffer pH 6.0**

Positive Controls:

WB : A431 cells, HeLa cells, HepG2 cells

IHC : human breast cancer tissue,

## Background Information

ESRP2 (Epithelial Splicing Regulatory Protein 2), also known as RBM35B (RNA binding motif protein 35B), is a member of the heterogeneous nuclear ribonucleoprotein (hnRNP) family of RNA binding proteins. ESRP2 plays a role in the regulation of alternative splicing events of pre-mRNAs (PMID: 27401076). Overexpression of ESRP2 has been described in various malignant tumors, such as pancreatic ductal adenocarcinoma, oral squamous carcinoma, ovarian cancer, and luminal-type breast cancer (PMID: 33339518).

## Notable Publications

Author	Pubmed ID	Journal	Application
Kalpit Shah	32820253	Oncogene	

## Storage

Storage:

Store at -20°C. Stable for one year after shipment.

Storage Buffer:

PBS with 0.02% sodium azide and 50% glycerol, pH7.3

Aliquoting is unnecessary for -20°C storage

For technical support and original validation data for this product please contact:

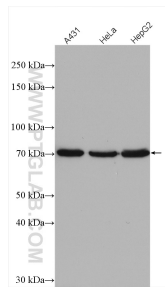
T: 4006900926

E: [Proteintech-CN@ptglab.com](mailto:Proteintech-CN@ptglab.com)

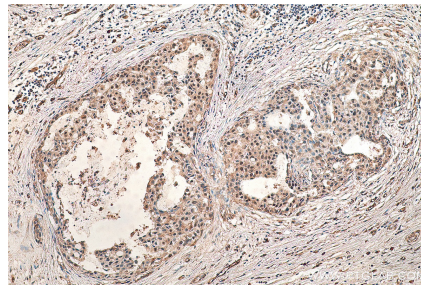
W: [ptgcn.com](http://ptgcn.com)

This product is exclusively available under Proteintech Group brand and is not available to purchase from any other manufacturer.

## Selected Validation Data



Various lysates were subjected to SDS PAGE followed by western blot with 23117-1-AP (ESRP2 antibody) at dilution of 1:300 incubated at room temperature for 1.5 hours.



Immunohistochemical analysis of paraffin-embedded human breast cancer tissue slide using 23117-1-AP (ESRP2 antibody) at dilution of 1:200 (under 10x lens). Heat mediated antigen retrieval with Tris-EDTA buffer (pH 9.0).